

ITR

INDEXABLE TOOL REPAIR

COMMON INDEXABLE TOOL HARDWARE CATALOG



ITR-INDEXABLE TOOL REPAIR

N16 W22033 JERICHO DRIVE, UNIT 1

WAUKESHA, WI 53186

PHONE: 262-549-9414

FAX: 262-549-9410

WWW.ITRINCWI.COM

JEFF@ITRINCWI.COM

ITR offers a full line of repair services and new tooling

- * Repair service : Standards & Specials
- * Boring bar repair: Carbide, Heavy Metal & Steel
- * Boring bars: New-Carbide, Heavy Metal & Steel
- * Custom Tools: New and modifications/Engineering revisions

TABLE OF CONTENTS

CHIPBREAKERS.....	2
CLAMPS.....	3-4
DIFFERENTIAL SCREWS.....	5
INSERT SCREWS.....	6
LOCK PINS.....	7-10
SHIMS SEATS.....	11-19

NOTE: IF YOU CANNOT LOCATE THE ITEM THAT YOU ARE LOOKING FOR PLEASE CALL
IF WE CANNOT GET YOUR ITEM, WE WILL LOCATE A PROVIDER FOR YOU

* Kennametal Kenloc LP Series reference data available upon request



INDEXABLE TOOL REPAIR
N16 W22033 JERICO DR. UNIT 1
WAUKESHA, WI 53186
PH: 262-549-9414
FAX: 262-549-9410
EMAIL: JEFF@ITRINCWI.COM

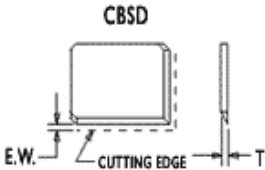
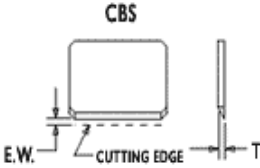
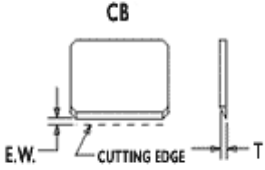
Since 1992, ITR has provided the best value added services for our customers' indexable tooling needs. ITR is dedicated to providing up-to-date manufacturing methods using the finest materials that are essential to producing first rate tooling. Depend on us for fast, cost effective solutions to any indexable tooling problems.

CHIPBREAKERS

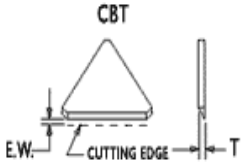
STYLE	INSERT I.C.	T	E.W.	NET EACH
-------	-------------	---	------	----------

CB-1450	1	0.094	0.177	\$5.64
CB-1510	1	0.094	0.218	\$6.40

CBS-12	3/8	0.094	0.062	\$3.00
CBS-12D	3/8	0.094	0.062	\$4.86
CBS-16	1/2	0.094	0.157	\$3.62
CBS-16D	1/2	0.094	0.093	\$3.62
CBS-16F	1/2	0.094	0.062	\$3.62
CBS-16N	1/2	0.094	0.101	\$3.62
CBS-24	3/4	0.094	0.188	\$4.80
CBS-24D	3/4	0.094	0.125	\$4.80
CBS-24F	3/4	0.094	0.062	\$4.80
CBS-24N	3/4	0.094	0.101	\$4.80
CBS-3L	3/8	0.094	0.063	\$3.00
CBS-4G	1/2	0.094	0.094	\$3.62
CBS-4H	1/2	0.094	0.156	\$3.62
CBS-4L	1/2	0.094	0.063	\$3.62
CBS-6G	3/4	0.094	0.125	\$4.80
CBS-6H	3/4	0.094	0.188	\$4.80
CBS-6L	3/4	0.094	0.063	\$4.80



CBT-12	3/8	0.094	0.129	\$3.34
CBT-12F	3/8	0.094	0.057	\$3.34
CBT-12N	3/8	0.094	0.081	\$3.34
CBT-16	1/2	0.094	0.191	\$3.34
CBT-16F	1/2	0.094	0.054	\$3.94
CBT-16N	1/2	0.094	0.101	\$3.94
CBT-2	1/4	0.094	0.062	\$2.92
CBT-20	5/8	0.094	0.191	\$4.62
CBT-20N	5/8	0.094	0.101	\$4.82
CBT-24	3/4	0.094	0.312	\$7.66
CBT-3G	3/8	0.094	0.094	\$4.48
CBT-3H	3/8	0.094	0.125	\$3.34
CBT-3L	3/8	0.094	0.063	\$3.34
CBT-4C	1/2	0.094	0.215	\$3.94
CBT-4G	1/2	0.094	0.094	\$3.94
CBT-4H	1/2	0.094	0.156	\$3.94
CBT-4L	1/2	0.094	0.063	\$3.94
CBT-5G	5/8	0.094	0.156	\$6.40
CBT-6H	3/4	0.094	0.345	\$7.66
CBT-6L	3/4	0.094	0.156	\$7.66
CBT-8	1/8	0.094	0.062	\$2.92

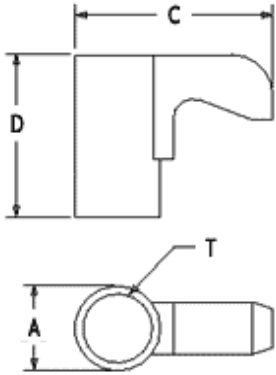


ITR
INDEXABLE TOOL REPAIR

PHONE: 262-549-9414
 FAX: 262-549-9410
 JEFF@ITRINCWL.COM

CLAMPS

FINGER CLAMP



STYLE	A	C	D	T	NET EA
CL-5	0.28	0.52	0.35	10-32	\$4.02
CL-6	0.31	0.58	0.44	10-32	\$4.02
CL-7	0.31	0.64	0.31	10-32	\$4.02
CL-9	0.43	0.75	0.66	5/16-24	\$4.02
CL-10	0.43	0.75	0.44	5/16-24	\$7.46
CL-12	0.43	0.88	0.66	5/16-24	\$4.02
CL-19	0.31	0.55	0.31	10-32	\$5.06
CL-20	0.37	0.73	0.38	1/4-28	\$4.02
CL-21	0.37	0.73	0.53	1/4-28	\$8.52
CL-22	0.37	0.85	0.53	1/4-28	\$9.12
CL-23	0.37	0.85	0.4	1/4-28	\$8.68
CL-24	0.49	1.00	0.78	3/8-24	\$7.12
CL-30	0.43	1.00	0.66	5/16-24	\$7.12
CL-41	0.43	0.75	0.66	5/16-24	\$4.02
CL-42	0.43	0.88	0.66	5/16-24	\$4.02
CL-43	0.37	0.73	0.53	1/4-28	\$8.52
CL-44	0.37	0.85	0.53	1/4-28	\$8.52
CL-45	0.49	1.00	0.78	3/8-24	\$7.12
CL-46	0.43	1.00	0.66	5/16-24	\$7.66
CL-48	0.31	0.64	0.31	10-32	\$4.38

CLI-6	0.31	0.58	0.44	10-32	\$4.02
CLI-7	0.31	0.64	0.31	10-32	\$4.02
CLI-9	0.43	0.75	0.66	5/16-24	\$4.02
CLI-12	0.43	0.88	0.66	5/16-24	\$4.02
CLI-19	0.31	0.55	0.31	10-32	\$5.06
CLI-20	0.37	0.73	0.38	1/4-28	\$4.02
CLI-22	0.37	0.85	0.53	1/4-28	\$9.12
CLI-24	0.49	1.00	0.78	3/8-24	\$7.12
CLI-30	0.43	1.00	0.66	5/16-24	\$7.12

CLIP-9	-	-	-	-	\$5.68
CLIP-12	-	-	-	-	\$5.68

CLM-5	0.28	0.52	0.35	M5 x 0.8	\$7.06
CLM-6	0.31	0.58	0.44	M5 x 0.8	\$7.06
CLM-7	0.31	0.64	0.31	M5 x 0.8	\$7.06
CLM-9	0.43	0.75	0.66	M8 x 1.0	\$7.06
CLM-12	0.43	0.88	0.66	M8 x 1.0	\$7.86
CLM-20	0.37	0.73	0.38	M6 x 1.0	\$7.86
CLM-24	0.49	1.00	0.78	M10 x 1.25	\$9.56
CLM-30	0.43	1.00	0.66	M10 x 1.25	\$8.82



PHONE: 262-549-9414
 FAX: 262-549-9410
 JEFF@ITRINCWL.COM

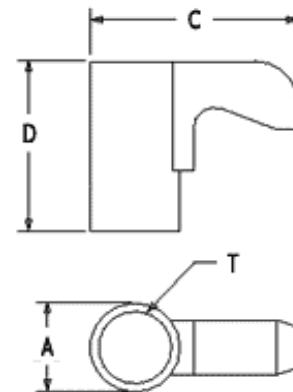
STYLE	A	C	D	T	NET EA
CK-6	0.31	0.58	0.44	10-32	\$4.02
CK-7	0.31	0.64	0.31	10-32	\$4.02
CK-7LP	0.31	0.64	0.27	10-32	\$8.02
CK-9	0.43	0.75	0.66	5/16-24	\$4.02
CK-10	0.43	0.75	0.44	5/16-24	\$7.46
CK-12	0.43	0.88	0.69	5/16-24	\$4.02
CK-13	0.43	0.88	0.47	5/16-24	\$7.52
CK-19	0.31	0.55	0.28	10-32	\$5.06
CK-20	0.37	0.73	0.40	1/4-28	\$4.02
CK-21	0.37	0.73	0.53	1/4-28	\$8.52
CK-22	0.37	0.85	0.53	1/4-28	\$9.12
CK-23	0.37	0.85	0.40	1/4-28	\$8.68
CK-24	0.49	1.00	0.78	3/8-24	\$7.12
CK-28	0.43	1.00	0.74	5/16-24	\$10.44
CK-30	0.43	1.00	0.66	5/16-24	\$7.12
CK-43	0.43	1.00	0.66	5/16-24	\$17.90

CKM-6	0.31	0.58	0.44	M5 x 0.8	\$7.06
CKM-7	0.31	0.64	0.31	M5 x 0.8	\$7.06
CKM-7LP	0.31	0.64	0.27	M5 x 0.8	\$7.06
CKM-9	0.43	0.75	0.66	M8 x 1.0	\$7.06
CKM-10	0.43	0.75	0.44	M8 x 1.0	\$8.68
CKM-12	0.43	0.88	0.69	M8 x 1.0	\$7.86
CKM-13	0.43	0.88	0.47	M8 x 1.0	\$8.68
CKM-13LP	0.43	0.88	0.44	M8 x 1.0	\$8.68
CKM-20	0.37	0.73	0.40	M6 x 1.0	\$7.06
CKM-20LP	0.37	0.73	0.36	M6 x 1.0	\$7.06
CKM-21	0.37	0.73	0.53	M6 x 1.0	\$9.72
CKM-23	0.37	0.85	0.40	M6 x 1.0	\$8.68
CKM-23LP	0.37	0.85	0.36	M6 x 1.0	\$8.68
CKM-24	0.49	1.00	0.78	M10 x 1.25	\$9.48
CKM-34	0.31	0.64	0.31	M5 x 0.8	\$10.32
CKM-35	0.43	0.88	0.47	M8 x 1.0	\$10.32
CKM-37	0.37	0.73	0.40	M6 x 1.0	\$10.32
CKM-38	0.49	1.00	0.44	M10 x 1.25	\$23.42
CKM-41	0.37	0.85	0.53	M6 x 1.0	\$10.32

CM-72	0.86	0.43	0.37	0.31	\$8.12
CM-73	0.86	0.43	0.37	0.31	\$8.12
CM-74	0.53	0.34	0.28	0.24	\$13.56
CM-75	0.53	0.34	0.28	0.24	\$13.56
CM-120	0.86	0.39	0.37	0.31	\$11.20
CM-121	0.86	0.39	0.37	0.31	\$11.20

CLAMPS

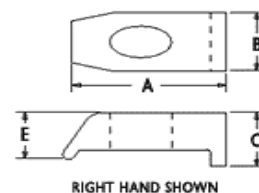
FINGER CLAMP



ITR
INDEXABLE TOOL REPAIR

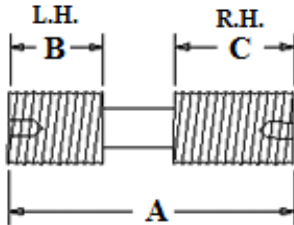
PHONE: 262-549-9414
FAX: 262-549-9410
JEFF@ITRINCWI.COM

NOTCH LOCK CLAMP



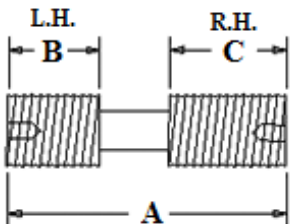
DIFFERENTIAL SCREWS

DIFFERENTIAL SCREW



STYLE	A	B	C	H	NET EACH
STC-4	1.16	0.50	0.41	5/32	\$1.00
STC-5	0.84	0.31	0.31	3/32	\$1.00
STC-8	1.00	0.28	0.50	5/32	\$1.00
STC-9	0.59	0.19	0.19	3/32	\$1.00
STC-11	0.81	0.28	0.28	1/8	\$1.00
STC-19	1.38	0.50	0.50	3/16	\$3.42
STC-20	1.16	0.45	0.45	1/8	\$1.00
STC-32	0.69	0.28	0.28	1/8	\$2.14
STC-36	0.81	0.28	0.28	3/32	\$2.44
STCC-8	25.0 mm	12.5 mm	6.5 mm	5/32	\$4.52
STCC-9	15.0 mm	5.0 mm	5.0 mm	3/32	\$3.40
STCC-11	20.0 mm	7.0 mm	7.0 mm	1/8	\$3.92
STCM-8	25.0 mm	12.5 mm	6.5 mm	4.0 mm	\$4.52
STCM-9	15.0 mm	5.0 mm	5.0 mm	2.5 mm	\$3.40
STCM-11	20.0 mm	7.0 mm	7.0 mm	3.0 mm	\$3.94

DIFFERENTIAL SCREW



XNS-26	0.75	0.31	0.31	5/64	\$3.18
XNS-35	0.59	0.22	0.22	3/32	\$1.00
XNS-36	0.75	0.25	0.25	3/32	\$1.00
XNS-37	0.84	0.31	0.31	3/32	\$1.00
XNS-38	1.00	0.37	0.37	3/32	\$1.00
XNS-46	0.75	0.31	0.31	1/8	\$1.00
XNS-47	0.81	0.28	0.28	1/8	\$1.00
XNS-48	1.00	0.37	0.37	1/8	\$1.00
XNS-510	1.25	0.50	0.50	5/32	\$1.00
XNS-58	1.00	0.28	0.50	5/32	\$1.00
XNS-59	1.12	0.41	0.47	5/32	\$1.00
XNS-610	1.25	0.50	0.50	3/16	\$3.42
XNSC-0515	15.0 mm	5.0 mm	5.0 mm	3/32	\$3.40
XNSC-0620	20.0 mm	7.0 mm	7.0 mm	1/8	\$3.94
XNSC-0825	25.0 mm	12.5 mm	6.5 mm	5/32	\$4.52
XNSM-0515	15.0 mm	5.0 mm	5.0 mm	2.5 mm	\$3.40
XNSM-0620	20.0 mm	7.0 mm	7.0 mm	3.0 mm	\$3.94
XNSM-0620 T15	-	-	-	-	\$4.88
XNSM-0825	25.0 mm	12.5 mm	6.5 mm	4.0 mm	\$4.52



PHONE: 262-549-9414
 FAX: 262-549-9410
 JEFF@ITRINCWL.COM

INSERT SCREWS

SCREW NUMBER	NET EA
--------------	--------

5513-020-01	\$2.60
5513-020-02	\$2.60
5513-020-03	\$2.60
5513-020-04	\$2.60
5513-020-09	\$2.60
5513-020-18	\$4.00
5513-020-035	\$2.60

7247-T7	\$2.60
724-T7	\$2.60
72567-T8	\$2.60
72567-T8	\$2.60
7375-T9	\$2.60
739-T9	\$2.60
7495-T15	\$2.60
7514-T20	\$2.60
7619-T25	\$2.60

F-0440-3	\$0.81
F-0832-3	\$0.81
F-1024-3	\$0.81
F-1032-6	\$1.05
FM-0832-6	\$0.81
GTS-1	\$3.00
GTS-2	\$3.54
GTS-3	\$5.13
GTS-4	\$8.52

MS-1027	\$2.60
MS-1153	\$2.60
MS-1154	\$2.60
MS-1155	\$2.60
MS-1156	\$2.60
MS-1158	\$3.92
MS-1864	\$2.60
MS-1939	\$2.60

SCREW NUMBER	NET EA
--------------	--------

SD-1	\$2.00
SD-2	\$2.36
SD-2 HEX	\$2.36
SD-3	\$3.42
SD-4	\$5.68

SE-02-01	\$2.60
SE-02-04	\$2.60
SE-02-11	\$2.60
SE-02-59	\$2.60
SE-02-81	\$2.60
SE-02-82	\$2.60
SE-03-02	\$2.60
SE-03-10	\$2.60
SE-03-12	\$2.60
SE-03-23	\$2.60
SE-03-26	\$2.60

SR14-541	\$2.60
SR14-544	\$2.60
SR14-544S	\$2.60
SR14-591	\$6.72
SR34-505	\$2.60
SRN-108C	\$20.90
SRN-33	\$4.36
SRN-33C	\$5.66
SRN-44C	\$8.52
SRN-65C	\$10.10
SRS-3	\$4.70
SRS-4	\$6.94

PT-317T	\$6.72
PT-464	\$11.73
PT-526T	\$3.90
PT-543T	\$3.90

PT-544T	\$2.18
PT-598T	\$2.60

SCREW NUMBER	NET EA
--------------	--------

CO-2205	\$2.60
CO-2505	\$2.60
CO-2506	\$2.60
CO-3007	\$2.60
CO-3507	\$2.60
CO-3508	\$2.60
CO-4008	\$2.60
CO-4011	\$2.60
CS-126	\$2.20



ITR
INDEXABLE TOOL REPAIR

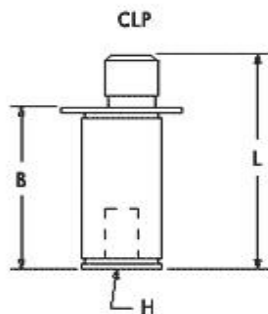
PHONE: 262-549-9414
FAX: 262-549-9410
JEFF@ITRINCWL.COM

NOTE: SCREWS LISTED ARE NOT "TORX PLUS" SERIES SCREWS

LOCK PINS

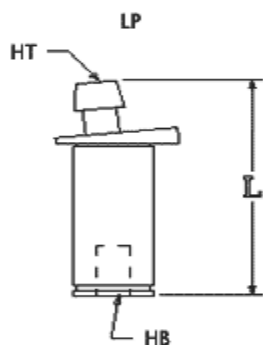
STYLE	INSERT I.C.	L	B	H	NET EACH
-------	-------------	---	---	---	----------

CAM PINS



CLP-14	1/4	0.50	0.35	1/16	\$7.36
CLP-24	3/8	0.50	0.35	3/32	\$7.36
CLP-25	3/8	0.62	0.48	3/32	\$7.36
CLP-28	3/8	1.00	0.85	3/32	\$8.12
CLP-312	1/2	1.50	1.28	1/8	\$8.28
CLP-36	1/2	0.75	0.53	1/8	\$8.28
CLP-38	1/2	1.00	0.80	1/8	\$8.68
CLP-410	5/8	1.25	0.98	5/32	\$8.62
CLP-412	5/8	1.50	1.25	5/32	\$8.62
CLP-48	5/8	1.00	0.73	5/32	\$8.62
CLP-510	3/4	1.25	0.98	5/32	\$9.48
CLP-512S	3/4	1.50	1.23	5/32	\$12.88
CLP-512T	3/4	1.50	1.10	5/32	\$9.48
CLP-58	3/4	1.00	0.73	5/32	\$9.48
CLP-612	1	1.50	1.10	7/32	\$13.44
CLP-616	1	2.00	1.60	7/32	\$13.44

STYLE	INSERT I.C.	L	HT	HB	NET EACH
-------	-------------	---	----	----	----------



LP-30	3/8	0.53	3/64	3/32	\$8.10
LP-31	3/8	0.59	3/64	3/32	\$8.10
LP-32	3/8	0.97	3/64	3/32	\$8.10
LP-53	1/2	0.63	3/32	1/8	\$8.10
LP-55	1/2	0.71	3/32	1/8	\$8.10
LP-56	1/2	0.96	3/32	1/8	\$8.10
LP-57	1/2	1.21	3/32	1/8	\$8.10
LP-58	1/2	1.46	3/32	1/8	\$8.10
LP-59	3/8	0.45	3/32	1/8	\$8.10
LP-65	5/8	0.97	7/64	5/32	\$8.10
LP-66	5/8	1.22	7/64	5/32	\$8.10
LP-67	5/8	1.47	7/64	5/32	\$8.10
LP-68	5/8	0.72	7/64	5/32	\$8.10
LP-70	3/4	0.97	5/32	5/32	\$9.00
LP-71	3/4	1.22	5/32	5/32	\$9.00
LP-72	3/4	1.47	5/32	5/32	\$9.00
LP-102	3/4	1.47	5/32	5/32	\$9.74
LP-103	1"	1.97	5/32	5/32	\$9.74

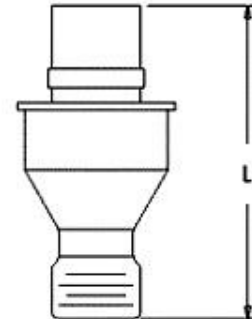
ITR
INDEXABLE TOOL REPAIR
 PHONE: 262-549-9414
 FAX: 262-549-9410
 JEFF@ITRINCWL.COM

LOCK PINS

STYLE	INSERT I.C.	L	H	T	NET EACH
-------	-------------	---	---	---	----------

KL-23	1/4	0.32	1/16	8-32	\$3.25
KL-33	3/8	0.34	5/64	10-32	\$3.25
KL-33L	3/8	0.41	5/64	10-32	\$3.25
KL-34	3/8	0.45	5/64	10-32	\$3.25
KL-34L	3/8	0.51	5/64	10-32	\$3.25
KL-44	1/2	0.51	3/32	1/4-28	\$3.25
KL-46	1/2	0.67	3/32	1/4-28	\$3.25
KL-46L	1/2	0.73	3/32	1/4-28	\$3.25
KL-58	5/8	0.86	1/8	5/16-24	\$3.25
KL-68	3/4	0.86	9/64	3/8-24	\$3.25
KL-68L	3/4	0.95	9/64	3/8-24	\$3.25

NEGATIVE LOCK PINS



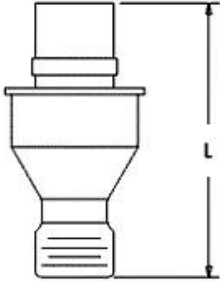
KLC-23	1/4	8.2 mm	1/16	M4 x 0,7	\$4.25
KLC-33	3/8	8.8 mm	5/64	M5 x 0,8	\$4.25
KLC-33L	3/8	10.4 mm	5/64	M5 x 0,8	\$4.25
KLC-34L	3/8	11.5 mm	5/64	M5 x 0,8	\$4.25
KLC-43	1/2	10.8 mm	5/64	M5 x 0,8	\$4.25
KLC-46	1/2	17.2 mm	3/32	M6,3 x 1	\$4.25
KLC-46L	1/2	18.6 mm	3/32	M6,3 x 1	\$4.25
KLC-46S	1/2	15.6 mm	3/32	M6,3 x 1	\$4.25
KLC-54	5/8	18.6 mm	1/8	M6,3 x 1	\$4.25
KLC-58	5/8	21.8 mm	1/8	M8 x 1	\$4.25
KLC-68	3/4	21.8 mm	9/64	M10 x 1	\$4.25

KLM-23	1/4	8.2 mm	1.5 mm	M4 x 0,7	\$4.25
KLM-33	3/8	8.8 mm	2.0 mm	M5 x 0,8	\$4.25
KLM-33L	3/8	10.4 mm	2.0 mm	M5 x 0,8	\$4.25
KLM-34L	3/8	13.0 mm	2.0 mm	M5 x 0,8	\$4.25
KLM-43	1/2	10.8 mm	2.0 mm	M5 x 0,8	\$4.25
KLM-44	1/2	13.2 mm	2.5 mm	M6,3 x 1	\$4.25
KLM-46	1/2	17.2 mm	2.5 mm	M6,3 x 1	\$4.25
KLM-46L	1/2	18.6 mm	2.5 mm	M6,3 x 1	\$4.25
KLM-46S	1/2	15.6 mm	2.5 mm	M6,3 x 1	\$4.25
KLM-54	5/8	18.6 mm	2.5 mm	M6,3 x 1	\$4.25
KLM-56	5/8	17.8 mm	3.0 mm	M8 x 1	\$4.25
KLM-58	5/8	21.8 mm	3.0 mm	M8 x 1	\$4.25
KLM-66	3/4	17.8 mm	4.0 mm	M10 x 1	\$4.25
KLM-68	3/4	21.8 mm	4.0 mm	M10 x 1	\$4.25

ITR
INDEXABLE TOOL REPAIR
 PHONE: 262-549-9414
 FAX: 262-549-9410
 JEFF@ITRINCWL.COM

LOCK PINS

NEGATIVE LOCK PINS



STYLE	INSERT I.C.	L	H	T	NET EACH
NL-23	1/4	0.32	1/16	8-32	\$3.25
NL-33	3/8	0.34	5/64	8-32	\$3.25
NL-33L	3/8	0.41	5/64	10-32	\$3.25
NL-34	3/8	0.45	5/64	10-32	\$3.25
NL-34L	3/8	0.51	5/64	10-32	\$3.25
NL-43	1/2	0.42	5/64	1/4-28	\$3.25
NL-44	1/2	0.51	3/32	1/4-28	\$3.25
NL-46	1/2	0.67	3/32	1/4-28	\$3.25
NL-46L	1/2	0.73	3/32	1/4-28	\$3.25
NL-55	5/8	0.64	1/8	5/16-24	\$3.25
NL-56	5/8	0.70	1/8	5/16-24	\$3.25
NL-56L	5/8	0.85	1/8	5/16-24	\$10.00
NL-57	5/8	0.81	1/8	5/16-24	\$8.00
NL-58	5/8	0.86	1/8	5/16-24	\$3.25
NL-58L	5/8	0.89	1/8	5/16-24	\$6.00
NL-66	3/4	0.70	9/64	3/8-24	\$5.00
NL-66L	3/4	0.83	9/64	3/8-24	\$6.00
NL-68	3/4	0.86	9/64	3/8-24	\$3.25
NL-68L	3/4	0.95	9/64	3/8-24	\$3.25
NL-68S	3/4	-	-	3/8-24	\$3.25
NL-808	1	0.94	5/32	7/16-20	\$6.00
NL-810	1	1.17	5/32	9/16-18	\$6.00

NLC-23	1/4	8.2 mm	1/16	M4 x 0,7	\$4.25
NLC-33	3/8	8.8 mm	5/64	M5 x 0,8	\$4.25
NLC-33L	3/8	10.4 mm	5/64	M5 x 0,8	\$4.25
NLC-34L	3/8	13.0 mm	5/64	M5 x 0,8	\$4.25
NLC-43	1/2	10.8 mm	5/64	M5 x 0,8	\$4.25
NLC-46	1/2	17.2 mm	3/32	M6,3 x 1	\$4.25
NLC-46S	1/2	15.6 mm	3/32	M6,3 x 1	\$4.25
NLC-54	5/8	18.6 mm	1/8	M6,3 x 1	\$4.25
NLC-58	5/8	21.8 mm	1/8	M8 x 1	\$4.25
NLC-68	3/4	21.8 mm	9/64	M10 x 1	\$4.25

NLM-23	1/4	8.2 mm	1.5 mm	M4 x 0,7	\$4.25
NLM-33	3/8	8.8 mm	2.0 mm	M5 x 0,8	\$4.25
NLM-33L	3/8	10.4 mm	2.0 mm	M5 x 0,8	\$4.25
NLM-34L	3/8	13.0 mm	2.0 mm	M5 x 0,8	\$4.25
NLM-43	1/2	10.8 mm	2.0 mm	M5 x 0,8	\$4.25
NLM-44	1/2	13.2 mm	2.5 mm	M6,3 x 1	\$4.25
NLM-46	1/2	17.2 mm	2.5 mm	M6,3 x 1	\$4.25
NLM-46L	1/2	18.6 mm	2.5 mm	M6,3 x 1	\$4.25
NLM-46S	1/2	15.6 mm	2.5 mm	M6,3 x 1	\$4.25

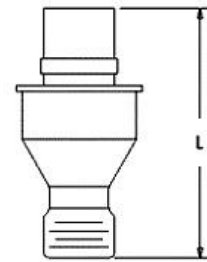


PHONE: 262-549-9414
 FAX: 262-549-9410
 JEFF@ITRINCWI.COM

LOCK PINS

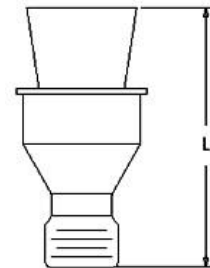
STYLE	INSERT I.C.	L	H	T	NET EACH
NLM-54	5/8	18.6 mm	2.5 mm	M6,3 x 1	\$4.25
NLM-56	5/8	17.8 mm	3.0 mm	M8 x 1	\$4.25
NLM-58	5/8	21.8 mm	3.0 mm	M8 x 1	\$4.25
NLM-58L	5/8	22.6 mm	3.0 mm	M8 x 1	\$4.25
NLM-66	3/4	17.8 mm	4.0 mm	M10 x 1	\$4.25
NLM-68	3/4	21.8 mm	4.0 mm	M10 x 1	\$4.25

NEGATIVE LOCK PINS



STYLE	INSERT I.C.	L	H	T	NET EACH
PL-2.53	5/16	0.32	1/16	1/16	\$5.00
PL-33	3/8	0.34	5/64	5/64	\$5.00
PL-34	3/8	0.45	5/64	5/64	\$5.00
PL-44	1/2	0.52	3/32	3/32	\$8.00
PL-46	1/2	0.67	3/32	3/32	\$5.00
PL-58	5/8	0.86	1/8	1/8	\$5.00
PL-68	3/4	0.86	9/64	9/64	\$5.00

POSITIVE LOCK PINS



VALENITE LOCK PINS	NET EACH
--------------------	----------

H-405-1C	\$8.13
H-407-1C	\$8.13
H-410-1C	\$8.13
H-413-1C	\$8.13
H-414-1CA	\$8.13
H-417-1C	\$8.13
H-418-1C	\$8.13
H-419-1C	\$8.13
H-508-1C	\$8.13
H-510-1C	\$8.13
H-512-1C	\$8.13
I-H-304-1A	\$8.13
I-H-310-1	\$8.13
I-H-310-1C	\$8.13

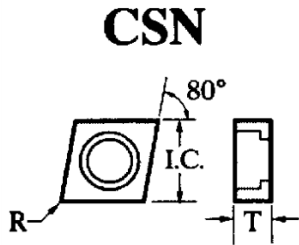
METCUT LOCK PINS

PART NO	NET EACH
053-0231	\$6.24
053-0321	\$5.20
053-0331	\$5.20
053-0431	\$5.20
053-0441	\$5.20
053-0541	\$5.20
053-0641	\$8.96

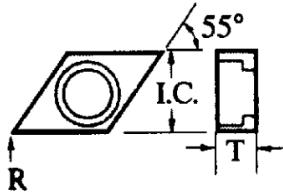
ITR
INDEXABLE TOOL REPAIR

PHONE: 262-549-9414
FAX: 262-549-9410
JEFF@ITRINCWI.COM

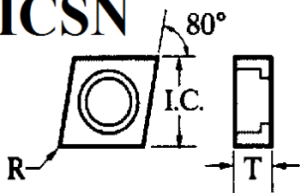
SHIM SEATS



DSN



ICSN



STYLE	INSERT I.C.	T	R	NET EACH
CSN-332	3/8	3/16	1/32	\$3.66
CSN-432	1/2	3/16	1/32	\$4.20
CSN-433	1/2	3/16	3/64	\$4.20
CSN-434	1/2	3/16	1/16	\$4.20
CSN-443	1/2	1/4	3/64	\$5.03
CSN-533	5/8	3/16	3/64	\$5.14
CSN-543	5/8	1/4	3/64	\$6.56
CSN-632	-	-	-	\$5.94
CSN-633	3/4	3/16	3/64	\$5.94
CSN-634	-	-	-	\$5.94
CSN-642	3/4	1/4	1/32	\$8.04
CSN-643	3/4	1/4	3/64	\$8.04
CSN-846	1	1/4	3/64	\$11.68

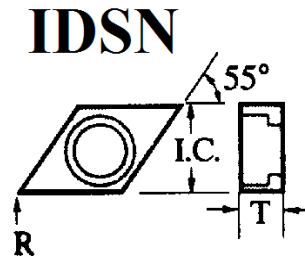
DSN-322	3/8	1/8	1/32	\$3.22
DSN-323	-	-	-	\$3.22
DSN-432	1/2	3/16	1/32	\$3.80
DSN-433	1/2	3/16	3/64	\$3.80
DSN-443	1/2	1/4	3/64	\$4.78
DSN-532	-	-	-	\$5.76
DSN-533	5/8	3/16	3/64	\$5.76
DSN-534	5/8	3/16	1/16	\$5.76
DSN-543	5/8	1/4	3/64	\$5.78

ICSN-322	3/8	1/8	1/32	\$3.54
ICSN-332	3/8	3/16	1/32	\$3.66
ICSN-333	-	-	-	\$5.78
ICSN-422	1/2	1/8	1/32	\$4.24
ICSN-423	1/2	1/8	3/64	\$4.24
ICSN-432	1/2	3/16	1/32	\$4.20
ICSN-433	1/2	3/16	3/64	\$4.20
ICSN-434	-	-	-	\$4.20
ICSN-443	1/2	1/4	3/64	\$5.30
ICSN-532	5/8	3/16	1/32	\$5.14
ICSN-533	5/8	3/16	3/64	\$5.14
ICSN-543	5/8	1/4	3/64	\$6.56
ICSN-623	-	-	-	\$5.94
ICSN-633	3/4	1/6	3/64	\$5.94
ICSN-634	3/4	3/16	1/16	\$5.94
ICSN-643	3/4	1/4	3/64	\$8.04
ICSN-644	3/4	1/4	1/16	\$8.04
ICSN-846	1	1/4	3/32	\$11.68

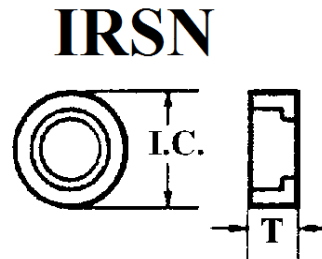
ITR
INDEXABLE TOOL REPAIR
 PHONE: 262-549-9414
 FAX: 262-549-9410
 JEFF@ITRINCWL.COM

SHIM SEATS

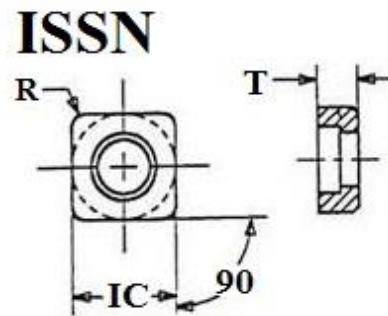
STYLE	INSERT I.C.	T	R	NET EACH
IDSN-322	3/8	1/8	1/8	\$3.22
IDSN-423	1/2	1/8	1/8	\$3.94
IDSN-432	1/2	3/16	3/16	\$3.80
IDSN-433	1/2	3/16	3/16	\$3.80
IDSN-434	1/2	3/16	3/16	\$3.80
IDSN-442	1/2	1/4	1/32	\$4.78
IDSN-443	1/2	1/4	3/64	\$4.78
IDSN-532	-	-	-	\$5.76
IDSN-533	5/8	3/16	3/64	\$5.76
IDSN-534	5/8	3/16	1/16	\$5.76
IDSN-538	5/8	3/16	1/8	\$8.10
IDSN-543	5/8	1/4	3/64	\$5.78



IRSN-32	3/8	1/8	-	\$3.22
IRSN-33	3/8	3/16	-	\$5.24
IRSN-41	1/2	45/64	-	\$13.32
IRSN-42	1/2	1/8	-	\$4.24
IRSN-43	1/2	3/16	-	\$3.34
IRSN-44	1/2	1/4	-	\$5.02
IRSN-53	5/8	3/16	-	\$5.75
IRSN-54	5/8	1/4	-	\$9.74
IRSN-62	3/4	1/8	-	\$8.14
IRSN-63	3/4	3/16	-	\$6.04
IRSN-84	1	1/4	-	\$12.02



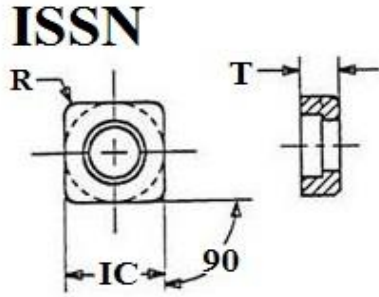
ISSN-322	3/8	1/8	1/32	\$2.58
ISSN-323	3/8	1/8	3/64	\$2.58
ISSN-332	3/8	3/16	1/32	\$5.44
ISSN-333	3/8	3/16	3/64	\$5.44
ISSN-422	1/2	1/8	1/32	\$4.40
ISSN-423	1/2	1/8	3/64	\$4.40
ISSN-432	1/2	3/16	1/32	\$4.10
ISSN-433	1/2	3/16	3/64	\$4.10
ISSN-434	1/2	3/16	1/16	\$4.10
ISSN-436	1/2	3/16	3/32	\$4.10
ISSN-442	1/2	1/4	1/32	\$5.02
ISSN-443	1/2	1/4	3/64	\$5.02
ISSN-532	5/8	3/16	1/32	\$4.88
ISSN-533	5/8	3/16	3/64	\$4.88
ISSN-534	5/8	3/16	1/16	\$4.88
ISSN-543	5/8	1/4	3/64	\$8.72



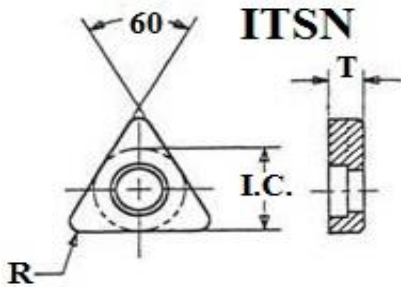
ITR
INDEXABLE TOOL REPAIR

PHONE: 262-549-9414
FAX: 262-549-9410
JEFF@ITRINCWI.COM

SHIM SEATS



STYLE	INSERT I.C.	T	R	NET EACH
ISSN-623	3/4	1/8	3/64	\$5.94
ISSN-632	3/4	1/6	1/32	\$5.76
ISSN-633	3/4	3/16	3/64	\$5.76
ISSN-634	3/4	3/16	1/16	\$5.76
ISSN-643	3/4	1/4	3/64	\$8.36
ISSN-644	3/4	1/4	1/16	\$8.36
ISSN-844	1	1/4	1/16	\$12.02
ISSN-846	1	1/4	3/32	\$12.02



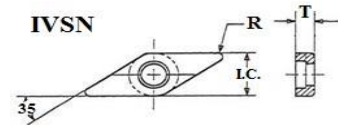
ITSN-322	3/8	1/8	1/32	\$1.92
ITSN-323	3/8	1/8	3/64	\$1.92
ITSN-324	3/8	1/8	1/16	\$1.92
ITSN-332	3/8	3/16	1/32	\$3.04
ITSN-333	3/8	3/16	3/64	\$3.04
ITSN-334	3/8	3/16	1/16	\$3.04
ITSN-423	1/2	1/8	3/64	\$5.32
ITSN-424	1/2	1/8	1/16	\$5.32
ITSN-432	1/2	3/16	1/32	\$4.72
ITSN-433	1/2	3/16	3/64	\$4.72
ITSN-434	1/2	3/16	1/16	\$4.72
ITSN-438	1/2	3/16	3/32	\$4.72
ITSN-443	1/2	1/4	1/8	\$6.06
ITSN-532	5/8	3/16	3/64	\$6.04
ITSN-533	5/8	3/16	1/32	\$6.04
ITSN-534	5/8	3/16	3/64	\$6.04
ITSN-535	5/8	3/16	1/16	\$6.04
ITSN-538	5/8	3/16	5/64	\$6.04
ITSN-539	5/8	3/16	1/8	\$6.04
ITSN-543	5/8	3/16	9/64	\$9.02
ITSN-544	5/8	1/4	3/64	\$9.02
ITSN-553	5/8	5/16	3/64	\$9.70
ITSN-633	3/4	3/16	3/64	\$9.82
ITSN-636	3/4	3/16	3/32	\$8.22
ITSN-637	3/4	3/16	7/64	\$8.22



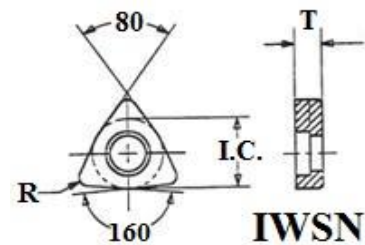
PHONE: 262-549-9414
 FAX: 262-549-9410
 JEFF@ITRINCWL.COM

SHIM SEATS

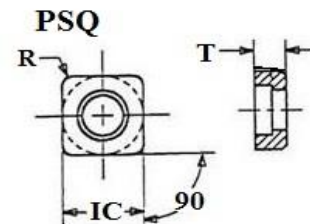
STYLE	INSERT I.C.	T	R	NET EACH
IVSN-322	3/8	1/8	1/32	\$3.38
IVSN-323	3/8	1/8	3/64	\$3.38
IVSN-324	3/8	1/8	1/16	\$3.38
IVSN-332	3/8	3/16	1/32	\$6.72
IVSN-423	1/2	1/8	3/64	\$4.48
IVSN-432	1/2	3/16	1/32	\$4.52
IVSN-433	1/2	3/16	3/64	\$4.52
IVSN-434	1/2	3/16	3/32	\$4.52



IWSN-322	3/8	1/8	1/32	\$3.82
IWSN-323	3/8	1/8	3/64	\$3.82
IWSN-422	-	-	-	\$7.54
IWSN-423	1/2	1/8	3/64	\$7.54
IWSN-432	1/2	3/16	1/32	\$5.18
IWSN-433	1/2	3/16	3/64	\$5.18
IWSN-434	1/2	3/16	1/16	\$5.18
IWSN-533	5/8	3/16	3/64	\$6.44
IWSN-635	3/4	3/16	5/64	\$8.40



PSQ-3	1/2	1/8	1/64	\$6.30
PSQ-3S	1/2	1/8	3/64	\$35.91
PSQ-4	3/4	1/8	3/64	\$8.43



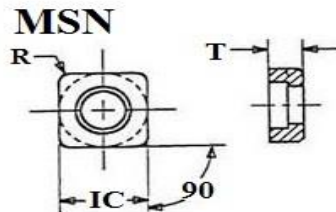
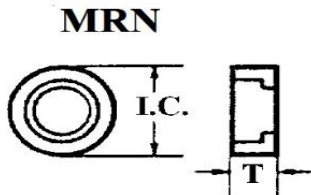
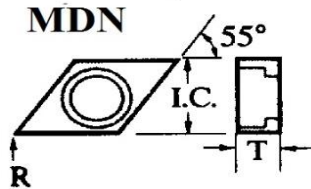
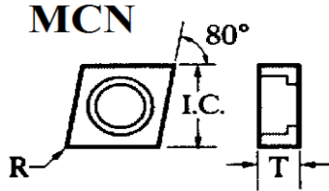
ITR
INDEXABLE TOOL REPAIR

PHONE: 262-549-9414
FAX: 262-549-9410
JEFF@ITRINCWL.COM

SHIM SEATS



PHONE: 262-549-9414
 FAX: 262-549-9410
 JEFF@ITRINCWL.COM



STYLE	INSERT I.C.	T	R	NET EACH
MCN-322	3/8	1/8	1/32	\$3.54
MCN-432	1/2	3/16	1/32	\$4.20
MCN-433	1/2	3/16	3/64	\$4.20
MCN-434	1/2	3/16	1/16	\$4.20
MCN-443	1/2	1/4	3/64	\$5.30
MCN-533	5/8	1/4	3/64	\$5.14
MCN-534	5/8	1/4	1/16	\$5.14
MCN-543	5/8	1/4	3/64	\$6.56
MCN-544	5/8	1/4	1/16	\$6.56
MCN-633	3/4	3/16	3/64	\$5.94
MCN-634	3/4	3/16	1/16	\$5.94
MCN-644	3/4	1/4	1/16	\$8.04

MDN-322	3/8	1/8	1/32	\$3.22
MDN-422	1/2	1/8	1/32	\$3.94
MDN-432	1/2	3/16	1/32	\$3.80
MDN-434	1/2	3/16	1/16	\$3.80
MDN-442	1/2	1/4	1/32	\$4.78
MDN-444	1/2	1/4	1/16	\$4.78
MDN-534	5/8	3/16	1/16	\$5.76

MRN-32	3/8	1/8	-	\$3.22
MRN-33	3/8	3/16	-	\$5.24
MRN-43	1/2	3/16	-	\$3.34
MRN-44	1/2	1/4	-	\$5.02
MRN-53	5/8	3/16	-	\$5.32
MRN-63	3/4	3/16	-	\$6.04
MRN-84	1	1/4	-	\$12.02

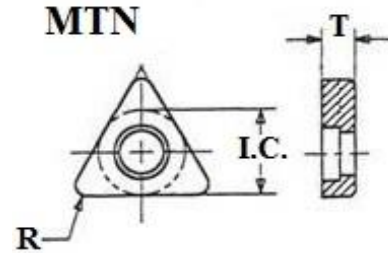
MSN-323	3/8	1/8	3/64	\$2.58
MSN-433	1/2	3/16	3/64	\$4.10
MSN-436	1/2	3/16	3/32	\$4.10
MSN-442	1/2	1/4	1/32	\$5.02
MSN-443	1/2	1/4	3/64	\$5.02
MSN-533	5/8	3/16	3/64	\$4.90
MSN-543	5/8	1/4	3/64	\$8.72
MSN-634	3/4	3/16	1/16	\$5.76
MSN-644	3/4	1/4	1/16	\$8.36
MSN-846	1	1/4	3/32	\$12.02

SHIM SEATS

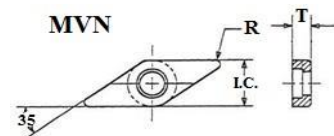
ITR
INDEXABLE TOOL REPAIR

PHONE: 262-549-9414
 FAX: 262-549-9410
 JEFF@ITRINCWL.COM

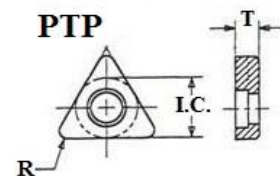
STYLE	INSERT I.C.	T	R	NET EACH
MTN-322	3/8	1/8	1/32	\$2.96
MTN-323	3/8	1/8	3/64	\$2.96
MTN-324	3/8	1/8	1/16	\$2.96
MTN-332	3/8	3/16	1/32	\$3.34
MTN-333	3/8	3/16	3/64	\$3.04
MTN-334	3/8	3/16	1/16	\$3.04
MTN-432	1/2	3/16	1/32	\$4.72
MTN-433	1/2	3/16	3/64	\$4.72
MTN-434	1/2	3/16	1/16	\$4.72
MTN-438	1/2	3/16	1/8	\$4.72
MTN-443	1/2	1/4	3/64	\$6.06
MTN-534	5/8	3/16	1/16	\$6.04
MTN-538	5/8	3/16	1/8	\$6.04
MTN-543	5/8	1/4	3/64	\$9.02
MTN-637	3/4	3/16	7/64	\$8.22



MVN-322	3/8	1/8	1/32	\$3.38
MVN-433	1/2	3/16	3/16	\$4.52

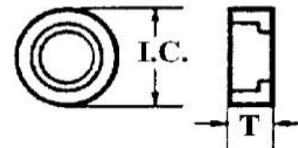


PTP-3	3/8	1/8	1/64	\$3.00
PTP-3S	3/8	1/8	1/64	\$8.14
PTP-4	1/2	1/8	3/64	\$4.18
PTP-4S	1/2	1/8	1/32	\$4.18

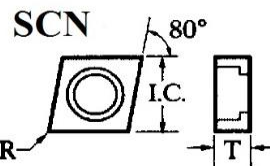


RS-43P	1/2	3/16	-	\$3.96
RS-53P	5/8	3/16	-	\$7.24
RS-63P	3/4	3/16	-	\$6.26
RS-83P	1	3/16	-	\$11.20

RS & RSN



RSN-32	3/8	1/8	-	\$3.22
RSN-33	3/8	3/16	-	\$5.24
RSN-43	1/2	3/16	-	\$3.34
RSN-53	5/8	3/16	-	\$5.32
RSN-63	3/4	3/16	-	\$6.04
RSN-84	1	1/4	-	\$12.02

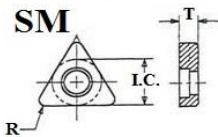
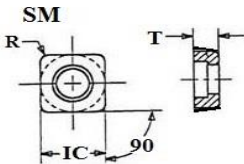
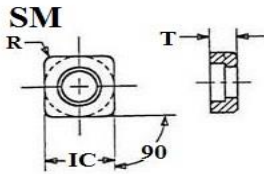
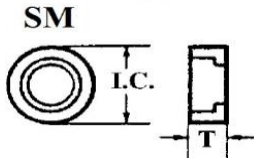
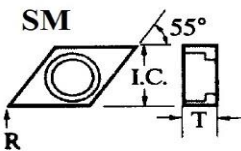
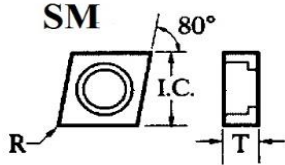


SCN-43	1/2	1/8	1/32	\$4.18
SCN-54C	5/8	3/16	3/64	\$5.82

SHIM SEATS



PHONE: 262-549-9414
 FAX: 262-549-9410
 JEFF@ITRINCWL.COM



STYLE	INSERT I.C.	T	R	NET EACH
SM-182	1/2	1/8	1/32	\$3.00
SM-303	1/2	3/16	1/32	\$4.36
SM-304	3/4	3/16	3/64	\$5.88
SM-305	3/4	1/4	3/64	\$10.20
SM-319	1	1/4	3/32	\$14.48
SM-385	3/4	1/4	3/64	\$10.20
SM-390	5/8	3/16	3/64	\$5.42
SM-396	1/2	1/2	3/16	\$11.08

SM-306	1/2	3/16	1/32	\$4.40
SM-307	5/8	3/16	3/64	\$6.04

SM-45	1/2	1/8	-	\$4.10
SM-218	1/2	3/16	-	\$6.02
SM-404	1/2	1/4	-	\$4.22

SM-297	1/2	3/16	1/32	\$3.96
SM-298	5/8	3/16	3/64	\$5.70
SM-299	3/4	3/16	3/64	\$5.94
SM-300	3/4	1/4	3/64	\$9.62

SM-27	3/4	1/8	3/64	\$5.14
SM-43	1/2	1/8	1/16	\$4.06
SM-47	1/2	3/16	1/16	\$6.34
SM-216	3/4	3/16	3/64	\$6.64

SM-36	3/4	1/8	3/64	\$5.62
SM-40	1/2	1/8	1/32	\$4.20

SM-290	3/8	1/8	1/32	4.10
SM-291	3/8	3/16	1/32	5.24
SM-292	1/2	3/16	3/64	5.14
SM-293	1/2	3/16	1/16	5.88
SM-294	3/4	3/16	3/32	8.38
SM-391	1/2	1/4	3/64	6.96

SHIM SEATS

STYLE	INSERT I.C.	T	R	NET EACH
-------	-------------	---	---	----------

SM-26	1/2	1/8	3/64	\$4.10
SM-42	3/8	1/8	1/32	\$3.64
SM-48	3/8	3/16	1/32	\$3.82

SM-37	1/2	1/8	3/64	\$4.18
SM-41	3/8	1/8	1/64	\$3.00

SM-310	3/8	1/8	3/64	\$4.20
SM-386	1/2	1/8	1/64	\$5.46

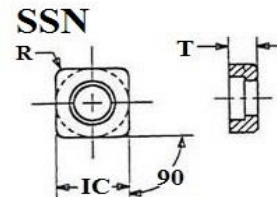
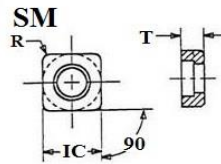
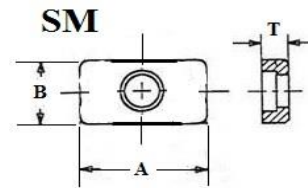
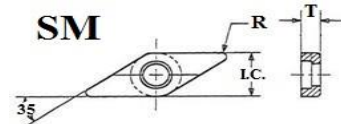
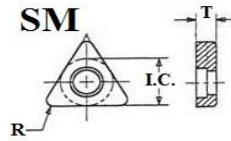
A Dim

SM-416	13/16	3/8	3/16	\$8.30
SM-419	47/64	27/64	3/16	\$7.94
SM-420	7/8	1/4	3/16	\$6.68

SM-122	1	1/4	1/16	\$18.28
--------	---	-----	------	---------

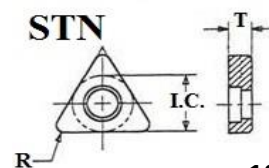
SSN-322	3/8	1/8	1/32	\$2.58
SSN-323	3/8	1/8	3/64	\$2.58
SSN-43	1/2	1/8	3/64	\$4.30
SSN-432	1/2	3/16	1/32	\$4.24
SSN-433	1/2	3/16	3/64	\$4.24
SSN-532	5/8	3/16	1/32	\$4.88
SSN-533	5/8	3/16	3/64	\$4.88
SSN-54	5/8	1/8	3/64	\$7.14
SSN-54C	5/8	3/16	3/64	\$7.34
SSN-543	5/8	1/4	3/64	\$8.72
SSN-632	3/4	3/16	1/32	\$5.76
SSN-633	3/4	3/16	3/64	\$5.76
SSN-634	3/4	3/16	1/16	\$5.76
SSN-643	3/4	1/4	3/64	\$8.36
SSN-644	3/4	1/4	1/16	\$8.36
SSN-844	1	1/4	1/16	\$12.02
SSN-846	1	1/4	3/32	\$12.02

STN-32	3/8	1/8	3/64	\$3.80
STN-43	1/2	1/8	1/16	\$4.36
STN-54	5/8	1/8	1/16	\$8.04
STN-54C	5/8	3/16	1/16	\$7.74
STN-66	3/4	3/16	3/32	\$10.92



ITR
INDEXABLE TOOL REPAIR

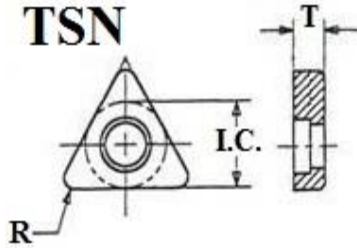
PHONE: 262-549-9414
FAX: 262-549-9410
JEFF@ITRINCWL.COM



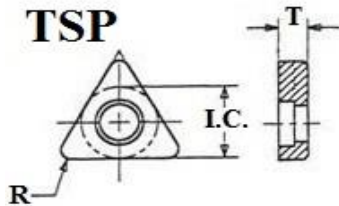
SHIM SEATS



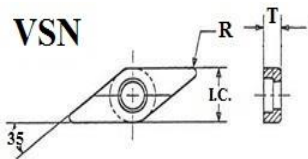
PHONE: 262-549-9414
 FAX: 262-549-9410
 JEFF@ITRINCWL.COM



STYLE	INSERT I.C.	T	R	NET EACH
TSN-322	3/8	1/8	1/32	\$2.92
TSN-323	3/8	1/8	3/64	\$2.92
TSN-324	3/8	1/8	1/16	\$2.92
TSN-332	3/8	3/16	1/32	\$3.04
TSN-333	3/8	3/16	3/64	\$3.04
TSN-432	1/2	3/16	1/32	\$5.14
TSN-433	1/2	3/16	3/64	\$5.14
TSN-434	1/2	3/16	1/16	\$5.14
TSN-435	1/2	3/16	5/64	\$5.14
TSN-438	1/2	3/16	1/8	\$4.72
TSN-532	5/8	3/16	1/32	\$6.04
TSN-533	5/8	3/16	3/64	\$6.04
TSN-534	5/8	3/16	1/16	\$6.04
TSN-535	5/8	3/16	5/64	\$6.04
TSN-538	5/8	3/16	1/8	\$6.04
TSN-539	5/8	3/16	9/64	\$6.04
TSN-544	5/8	1/4	1/16	\$9.02
TSN-633	3/4	3/16	3/64	\$9.88
TSN-634	3/4	3/16	1/16	\$9.88
TSN-635	3/4	3/16	5/64	\$8.22
TSN-636	3/4	3/16	3/32	\$8.22
TSN-637	3/4	3/16	7/64	\$8.22



TSP-321	3/8	1/8	1/64	\$3.00
TSP-431	1/2	3/16	1/64	\$7.44



VSN-322	3/8	1/8	1/32	\$3.38
VSN-324	3/8	1/8	1/16	\$3.38

ITR offers a full line of repair services and new tooling

- * Repair service : Standards & Specials
- * Boring bar repair: Carbide, Heavy Metal & Steel
- * Boring bars: New-Carbide, Heavy Metal & Steel
- * Custom Tools: New and modifications/Engineering revisions

TABLE OF CONTENTS

CHIPBREAKERS.....	2
CLAMPS.....	3-4
DIFFERENTIAL SCREWS.....	5
INSERT SCREWS.....	6
LOCK PINS.....	7-10
SHIMS SEATS.....	11-19

NOTE: IF YOU CANNOT LOCATE THE ITEM THAT YOU ARE LOOKING FOR PLEASE CALL IF WE CANNOT GET YOUR ITEM, WE WILL LOCATE A PROVIDER FOR YOU

* Kennametal Kenloc LP Series reference data available upon request



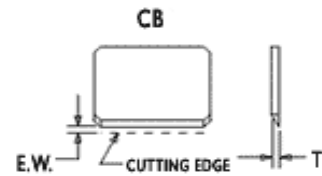
INDEXABLE TOOL REPAIR
N16 W22033 JERICO DR. UNIT 1
WAUKESHA, WI 53186
PH: 262-549-9414
FAX: 262-549-9410
EMAIL: JEFF@ITRINCWI.COM

Since 1992, ITR has provided the best value added services for our customers' indexable tooling needs. ITR is dedicated to providing up-to-date manufacturing methods using the finest materials that are essential to producing first rate tooling. Depend on us for fast, cost effective solutions to any indexable tooling problems.

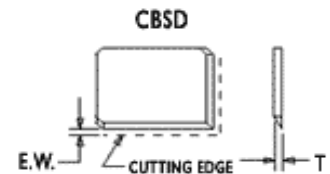
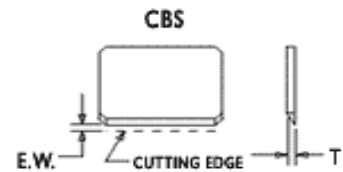
STYLE	INSERT I.C.	T	E.W.	NET EACH
-------	-------------	---	------	----------

CHIPBREAKERS

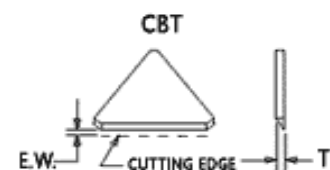
CB-1450	1	0.094	0.177	\$5.64
CB-1510	1	0.094	0.218	\$6.40



CBS-12	3/8	0.094	0.062	\$3.00
CBS-12D	3/8	0.094	0.062	\$4.86
CBS-16	1/2	0.094	0.157	\$3.62
CBS-16D	1/2	0.094	0.093	\$3.62
CBS-16F	1/2	0.094	0.062	\$3.62
CBS-16N	1/2	0.094	0.101	\$3.62
CBS-24	3/4	0.094	0.188	\$4.80
CBS-24D	3/4	0.094	0.125	\$4.80
CBS-24F	3/4	0.094	0.062	\$4.80
CBS-24N	3/4	0.094	0.101	\$4.80
CBS-3L	3/8	0.094	0.063	\$3.00
CBS-4G	1/2	0.094	0.094	\$3.62
CBS-4H	1/2	0.094	0.156	\$3.62
CBS-4L	1/2	0.094	0.063	\$3.62
CBS-6G	3/4	0.094	0.125	\$4.80
CBS-6H	3/4	0.094	0.188	\$4.80
CBS-6L	3/4	0.094	0.063	\$4.80



CBT-12	3/8	0.094	0.129	\$3.34
CBT-12F	3/8	0.094	0.057	\$3.34
CBT-12N	3/8	0.094	0.081	\$3.34
CBT-16	1/2	0.094	0.191	\$3.34
CBT-16F	1/2	0.094	0.054	\$3.94
CBT-16N	1/2	0.094	0.101	\$3.94
CBT-2	1/4	0.094	0.062	\$2.92
CBT-20	5/8	0.094	0.191	\$4.62
CBT-20N	5/8	0.094	0.101	\$4.82
CBT-24	3/4	0.094	0.312	\$7.66
CBT-3G	3/8	0.094	0.094	\$4.48
CBT-3H	3/8	0.094	0.125	\$3.34
CBT-3L	3/8	0.094	0.063	\$3.34
CBT-4C	1/2	0.094	0.215	\$3.94
CBT-4G	1/2	0.094	0.094	\$3.94
CBT-4H	1/2	0.094	0.156	\$3.94
CBT-4L	1/2	0.094	0.063	\$3.94
CBT-5G	5/8	0.094	0.156	\$6.40
CBT-6H	3/4	0.094	0.345	\$7.66
CBT-6L	3/4	0.094	0.156	\$7.66
CBT-8	1/8	0.094	0.062	\$2.92

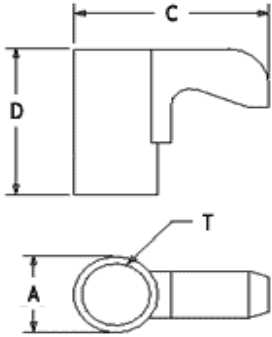


ITR
INDEXABLE TOOL REPAIR

PHONE: 262-549-9414
FAX: 262-549-9410
JEFF@ITRINCWL.COM

CLAMPS

FINGER CLAMP



STYLE	A	C	D	T	NET EA
CL-5	0.28	0.52	0.35	10-32	\$4.02
CL-6	0.31	0.58	0.44	10-32	\$4.02
CL-7	0.31	0.64	0.31	10-32	\$4.02
CL-9	0.43	0.75	0.66	5/16-24	\$4.02
CL-10	0.43	0.75	0.44	5/16-24	\$7.46
CL-12	0.43	0.88	0.66	5/16-24	\$4.02
CL-19	0.31	0.55	0.31	10-32	\$5.06
CL-20	0.37	0.73	0.38	1/4-28	\$4.02
CL-21	0.37	0.73	0.53	1/4-28	\$8.52
CL-22	0.37	0.85	0.53	1/4-28	\$9.12
CL-23	0.37	0.85	0.4	1/4-28	\$8.68
CL-24	0.49	1.00	0.78	3/8-24	\$7.12
CL-30	0.43	1.00	0.66	5/16-24	\$7.12
CL-41	0.43	0.75	0.66	5/16-24	\$4.02
CL-42	0.43	0.88	0.66	5/16-24	\$4.02
CL-43	0.37	0.73	0.53	1/4-28	\$8.52
CL-44	0.37	0.85	0.53	1/4-28	\$8.52
CL-45	0.49	1.00	0.78	3/8-24	\$7.12
CL-46	0.43	1.00	0.66	5/16-24	\$7.66
CL-48	0.31	0.64	0.31	10-32	\$4.38

CLI-6	0.31	0.58	0.44	10-32	\$4.02
CLI-7	0.31	0.64	0.31	10-32	\$4.02
CLI-9	0.43	0.75	0.66	5/16-24	\$4.02
CLI-12	0.43	0.88	0.66	5/16-24	\$4.02
CLI-19	0.31	0.55	0.31	10-32	\$5.06
CLI-20	0.37	0.73	0.38	1/4-28	\$4.02
CLI-22	0.37	0.85	0.53	1/4-28	\$9.12
CLI-24	0.49	1.00	0.78	3/8-24	\$7.12
CLI-30	0.43	1.00	0.66	5/16-24	\$7.12

CLIP-9	-	-	-	-	\$5.68
CLIP-12	-	-	-	-	\$5.68

CLM-5	0.28	0.52	0.35	M5 x 0.8	\$7.06
CLM-6	0.31	0.58	0.44	M5 x 0.8	\$7.06
CLM-7	0.31	0.64	0.31	M5 x 0.8	\$7.06
CLM-9	0.43	0.75	0.66	M8 x 1.0	\$7.06
CLM-12	0.43	0.88	0.66	M8 x 1.0	\$7.86
CLM-20	0.37	0.73	0.38	M6 x 1.0	\$7.86
CLM-24	0.49	1.00	0.78	M10 x 1.25	\$9.56
CLM-30	0.43	1.00	0.66	M10 x 1.25	\$8.82

ITR
INDEXABLE TOOL REPAIR

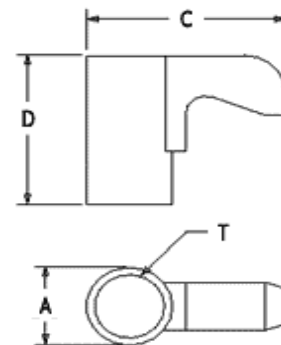
PHONE: 262-549-9414
FAX: 262-549-9410
JEFF@ITRINCWL.COM

STYLE	A	C	D	T	NET EA
-------	---	---	---	---	--------

CLAMPS

CK-6	0.31	0.58	0.44	10-32	\$4.02
CK-7	0.31	0.64	0.31	10-32	\$4.02
CK-7LP	0.31	0.64	0.27	10-32	\$8.02
CK-9	0.43	0.75	0.66	5/16-24	\$4.02
CK-10	0.43	0.75	0.44	5/16-24	\$7.46
CK-12	0.43	0.88	0.69	5/16-24	\$4.02
CK-13	0.43	0.88	0.47	5/16-24	\$7.52
CK-19	0.31	0.55	0.28	10-32	\$5.06
CK-20	0.37	0.73	0.40	1/4-28	\$4.02
CK-21	0.37	0.73	0.53	1/4-28	\$8.52
CK-22	0.37	0.85	0.53	1/4-28	\$9.12
CK-23	0.37	0.85	0.40	1/4-28	\$8.68
CK-24	0.49	1.00	0.78	3/8-24	\$7.12
CK-28	0.43	1.00	0.74	5/16-24	\$10.44
CK-30	0.43	1.00	0.66	5/16-24	\$7.12
CK-43	0.43	1.00	0.66	5/16-24	\$17.90

FINGER CLAMP

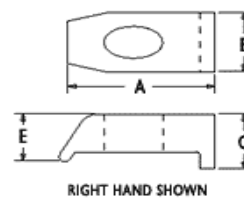


CKM-6	0.31	0.58	0.44	M5 x 0.8	\$7.06
CKM-7	0.31	0.64	0.31	M5 x 0.8	\$7.06
CKM-7LP	0.31	0.64	0.27	M5 x 0.8	\$7.06
CKM-9	0.43	0.75	0.66	M8 x 1.0	\$7.06
CKM-10	0.43	0.75	0.44	M8 x 1.0	\$8.68
CKM-12	0.43	0.88	0.69	M8 x 1.0	\$7.86
CKM-13	0.43	0.88	0.47	M8 x 1.0	\$8.68
CKM-13LP	0.43	0.88	0.44	M8 x 1.0	\$8.68
CKM-20	0.37	0.73	0.40	M6 x 1.0	\$7.06
CKM-20LP	0.37	0.73	0.36	M6 x 1.0	\$7.06
CKM-21	0.37	0.73	0.53	M6 x 1.0	\$9.72
CKM-23	0.37	0.85	0.40	M6 x 1.0	\$8.68
CKM-23LP	0.37	0.85	0.36	M6 x 1.0	\$8.68
CKM-24	0.49	1.00	0.78	M10 x 1.25	\$9.48
CKM-34	0.31	0.64	0.31	M5 x 0.8	\$10.32
CKM-35	0.43	0.88	0.47	M8 x 1.0	\$10.32
CKM-37	0.37	0.73	0.40	M6 x 1.0	\$10.32
CKM-38	0.49	1.00	0.44	M10 x 1.25	\$23.42
CKM-41	0.37	0.85	0.53	M6 x 1.0	\$10.32



PHONE: 262-549-9414
FAX: 262-549-9410
JEFF@ITRINCWI.COM

NOTCH LOCK CLAMP

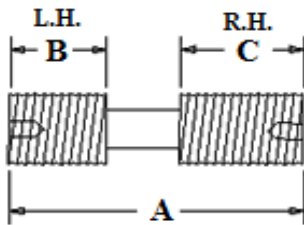


RIGHT HAND SHOWN

CM-72	0.86	0.43	0.37	0.31	\$8.12
CM-73	0.86	0.43	0.37	0.31	\$8.12
CM-74	0.53	0.34	0.28	0.24	\$13.56
CM-75	0.53	0.34	0.28	0.24	\$13.56
CM-120	0.86	0.39	0.37	0.31	\$11.20
CM-121	0.86	0.39	0.37	0.31	\$11.20

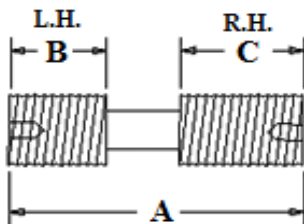
DIFFERENTIAL SCREWS

DIFFERENTIAL SCREW



STYLE	A	B	C	H	NET EACH
STC-4	1.16	0.50	0.41	5/32	\$1.00
STC-5	0.84	0.31	0.31	3/32	\$1.00
STC-8	1.00	0.28	0.50	5/32	\$1.00
STC-9	0.59	0.19	0.19	3/32	\$1.00
STC-11	0.81	0.28	0.28	1/8	\$1.00
STC-19	1.38	0.50	0.50	3/16	\$3.42
STC-20	1.16	0.45	0.45	1/8	\$1.00
STC-32	0.69	0.28	0.28	1/8	\$2.14
STC-36	0.81	0.28	0.28	3/32	\$2.44
STCC-8	25.0 mm	12.5 mm	6.5 mm	5/32	\$4.52
STCC-9	15.0 mm	5.0 mm	5.0 mm	3/32	\$3.40
STCC-11	20.0 mm	7.0 mm	7.0 mm	1/8	\$3.92
STCM-8	25.0 mm	12.5 mm	6.5 mm	4.0 mm	\$4.52
STCM-9	15.0 mm	5.0 mm	5.0 mm	2.5 mm	\$3.40
STCM-11	20.0 mm	7.0 mm	7.0 mm	3.0 mm	\$3.94

DIFFERENTIAL SCREW



XNS-26	0.75	0.31	0.31	5/64	\$3.18
XNS-35	0.59	0.22	0.22	3/32	\$1.00
XNS-36	0.75	0.25	0.25	3/32	\$1.00
XNS-37	0.84	0.31	0.31	3/32	\$1.00
XNS-38	1.00	0.37	0.37	3/32	\$1.00
XNS-46	0.75	0.31	0.31	1/8	\$1.00
XNS-47	0.81	0.28	0.28	1/8	\$1.00
XNS-48	1.00	0.37	0.37	1/8	\$1.00
XNS-510	1.25	0.50	0.50	5/32	\$1.00
XNS-58	1.00	0.28	0.50	5/32	\$1.00
XNS-59	1.12	0.41	0.47	5/32	\$1.00
XNS-610	1.25	0.50	0.50	3/16	\$3.42
XNSC-0515	15.0 mm	5.0 mm	5.0 mm	3/32	\$3.40
XNSC-0620	20.0 mm	7.0 mm	7.0 mm	1/8	\$3.94
XNSC-0825	25.0 mm	12.5 mm	6.5 mm	5/32	\$4.52
XNSM-0515	15.0 mm	5.0 mm	5.0 mm	2.5 mm	\$3.40
XNSM-0620	20.0 mm	7.0 mm	7.0 mm	3.0 mm	\$3.94
XNSM-0620 T15	-	-	-	-	\$4.88
XNSM-0825	25.0 mm	12.5 mm	6.5 mm	4.0 mm	\$4.52



PHONE: 262-549-9414
 FAX: 262-549-9410
 JEFF@ITRINCWL.COM

INSERT SCREWS

SCREW NUMBER	NET EA
--------------	--------

5513-020-01	\$2.60
5513-020-02	\$2.60
5513-020-03	\$2.60
5513-020-04	\$2.60
5513-020-09	\$2.60
5513-020-18	\$4.00
5513-020-035	\$2.60

7247-T7	\$2.60
724-T7	\$2.60
72567-T8	\$2.60
72567-T8	\$2.60
7375-T9	\$2.60
739-T9	\$2.60
7495-T15	\$2.60
7514-T20	\$2.60
7619-T25	\$2.60

F-0440-3	\$0.81
F-0832-3	\$0.81
F-1024-3	\$0.81
F-1032-6	\$1.05
FM-0832-6	\$0.81
GTS-1	\$3.00
GTS-2	\$3.54
GTS-3	\$5.13
GTS-4	\$8.52

MS-1027	\$2.60
MS-1153	\$2.60
MS-1154	\$2.60
MS-1155	\$2.60
MS-1156	\$2.60
MS-1158	\$3.92
MS-1864	\$2.60
MS-1939	\$2.60

SCREW NUMBER	NET EA
--------------	--------

SD-1	\$2.00
SD-2	\$2.36
SD-2 HEX	\$2.36
SD-3	\$3.42
SD-4	\$5.68

SE-02-01	\$2.60
SE-02-04	\$2.60
SE-02-11	\$2.60
SE-02-59	\$2.60
SE-02-81	\$2.60
SE-02-82	\$2.60
SE-03-02	\$2.60
SE-03-10	\$2.60
SE-03-12	\$2.60
SE-03-23	\$2.60
SE-03-26	\$2.60

SR14-541	\$2.60
SR14-544	\$2.60
SR14-544S	\$2.60
SR14-591	\$6.72
SR34-505	\$2.60
SRN-108C	\$20.90
SRN-33	\$4.36
SRN-33C	\$5.66
SRN-44C	\$8.52
SRN-65C	\$10.10
SRS-3	\$4.70
SRS-4	\$6.94

PT-317T	\$6.72
PT-464	\$11.73
PT-526T	\$3.90
PT-543T	\$3.90

PT-544T	\$2.18
PT-598T	\$2.60

SCREW NUMBER	NET EA
--------------	--------

CO-2205	\$2.60
CO-2505	\$2.60
CO-2506	\$2.60
CO-3007	\$2.60
CO-3507	\$2.60
CO-3508	\$2.60
CO-4008	\$2.60
CO-4011	\$2.60
CS-126	\$2.20



ITR
INDEXABLE TOOL REPAIR

PHONE: 262-549-9414
FAX: 262-549-9410
JEFF@ITRINCWL.COM

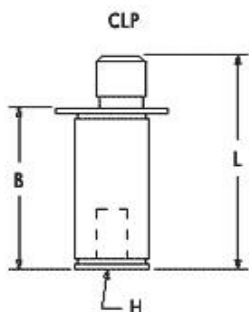
NOTE: SCREWS LISTED ARE NOT "TORX PLUS" SERIES SCREWS

INSERT SCREWS

LOCK PINS

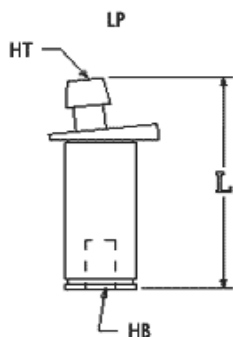
STYLE	INSERT I.C.	L	B	H	NET EACH
-------	-------------	---	---	---	----------

CAM PINS



CLP-14	1/4	0.50	0.35	1/16	\$7.36
CLP-24	3/8	0.50	0.35	3/32	\$7.36
CLP-25	3/8	0.62	0.48	3/32	\$7.36
CLP-28	3/8	1.00	0.85	3/32	\$8.12
CLP-312	1/2	1.50	1.28	1/8	\$8.28
CLP-36	1/2	0.75	0.53	1/8	\$8.28
CLP-38	1/2	1.00	0.80	1/8	\$8.68
CLP-410	5/8	1.25	0.98	5/32	\$8.62
CLP-412	5/8	1.50	1.25	5/32	\$8.62
CLP-48	5/8	1.00	0.73	5/32	\$8.62
CLP-510	3/4	1.25	0.98	5/32	\$9.48
CLP-512S	3/4	1.50	1.23	5/32	\$12.88
CLP-512T	3/4	1.50	1.10	5/32	\$9.48
CLP-58	3/4	1.00	0.73	5/32	\$9.48
CLP-612	1	1.50	1.10	7/32	\$13.44
CLP-616	1	2.00	1.60	7/32	\$13.44

STYLE	INSERT I.C.	L	HT	HB	NET EACH
-------	-------------	---	----	----	----------



LP-30	3/8	0.53	3/64	3/32	\$8.10
LP-31	3/8	0.59	3/64	3/32	\$8.10
LP-32	3/8	0.97	3/64	3/32	\$8.10
LP-53	1/2	0.63	3/32	1/8	\$8.10
LP-55	1/2	0.71	3/32	1/8	\$8.10
LP-56	1/2	0.96	3/32	1/8	\$8.10
LP-57	1/2	1.21	3/32	1/8	\$8.10
LP-58	1/2	1.46	3/32	1/8	\$8.10
LP-59	3/8	0.45	3/32	1/8	\$8.10
LP-65	5/8	0.97	7/64	5/32	\$8.10
LP-66	5/8	1.22	7/64	5/32	\$8.10
LP-67	5/8	1.47	7/64	5/32	\$8.10
LP-68	5/8	0.72	7/64	5/32	\$8.10
LP-70	3/4	0.97	5/32	5/32	\$9.00
LP-71	3/4	1.22	5/32	5/32	\$9.00
LP-72	3/4	1.47	5/32	5/32	\$9.00
LP-102	3/4	1.47	5/32	5/32	\$9.74
LP-103	1"	1.97	5/32	5/32	\$9.74

ITR
INDEXABLE TOOL REPAIR

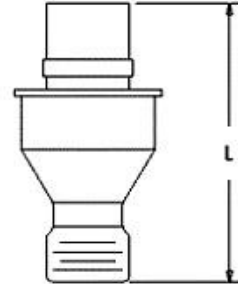
PHONE: 262-549-9414
FAX: 262-549-9410
JEFF@ITRINCWL.COM

LOCK PINS

STYLE	INSERT I.C.	L	H	T	NET EACH
-------	-------------	---	---	---	----------

KL-23	1/4	0.32	1/16	8-32	\$3.25
KL-33	3/8	0.34	5/64	10-32	\$3.25
KL-33L	3/8	0.41	5/64	10-32	\$3.25
KL-34	3/8	0.45	5/64	10-32	\$3.25
KL-34L	3/8	0.51	5/64	10-32	\$3.25
KL-44	1/2	0.51	3/32	1/4-28	\$3.25
KL-46	1/2	0.67	3/32	1/4-28	\$3.25
KL-46L	1/2	0.73	3/32	1/4-28	\$3.25
KL-58	5/8	0.86	1/8	5/16-24	\$3.25
KL-68	3/4	0.86	9/64	3/8-24	\$3.25
KL-68L	3/4	0.95	9/64	3/8-24	\$3.25

NEGATIVE LOCK PINS



KLC-23	1/4	8.2 mm	1/16	M4 x 0,7	\$4.25
KLC-33	3/8	8.8 mm	5/64	M5 x 0,8	\$4.25
KLC-33L	3/8	10.4 mm	5/64	M5 x 0,8	\$4.25
KLC-34L	3/8	11.5 mm	5/64	M5 x 0,8	\$4.25
KLC-43	1/2	10.8 mm	5/64	M5 x 0,8	\$4.25
KLC-46	1/2	17.2 mm	3/32	M6,3 x 1	\$4.25
KLC-46L	1/2	18.6 mm	3/32	M6,3 x 1	\$4.25
KLC-46S	1/2	15.6 mm	3/32	M6,3 x 1	\$4.25
KLC-54	5/8	18.6 mm	1/8	M6,3 x 1	\$4.25
KLC-58	5/8	21.8 mm	1/8	M8 x 1	\$4.25
KLC-68	3/4	21.8 mm	9/64	M10 x 1	\$4.25

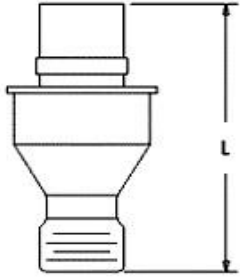
KLM-23	1/4	8.2 mm	1.5 mm	M4 x 0,7	\$4.25
KLM-33	3/8	8.8 mm	2.0 mm	M5 x 0,8	\$4.25
KLM-33L	3/8	10.4 mm	2.0 mm	M5 x 0,8	\$4.25
KLM-34L	3/8	13.0 mm	2.0 mm	M5 x 0,8	\$4.25
KLM-43	1/2	10.8 mm	2.0 mm	M5 x 0,8	\$4.25
KLM-44	1/2	13.2 mm	2.5 mm	M6,3 x 1	\$4.25
KLM-46	1/2	17.2 mm	2.5 mm	M6,3 x 1	\$4.25
KLM-46L	1/2	18.6 mm	2.5 mm	M6,3 x 1	\$4.25
KLM-46S	1/2	15.6 mm	2.5 mm	M6,3 x 1	\$4.25
KLM-54	5/8	18.6 mm	2.5 mm	M6,3 x 1	\$4.25
KLM-56	5/8	17.8 mm	3.0 mm	M8 x 1	\$4.25
KLM-58	5/8	21.8 mm	3.0 mm	M8 x 1	\$4.25
KLM-66	3/4	17.8 mm	4.0 mm	M10 x 1	\$4.25
KLM-68	3/4	21.8 mm	4.0 mm	M10 x 1	\$4.25

ITR
INDEXABLE TOOL REPAIR

PHONE: 262-549-9414
FAX: 262-549-9410
JEFF@ITRINCWI.COM

LOCK PINS

NEGATIVE LOCK PINS



STYLE	INSERT I.C.	L	H	T	NET EACH
NL-23	1/4	0.32	1/16	8-32	\$3.25
NL-33	3/8	0.34	5/64	8-32	\$3.25
NL-33L	3/8	0.41	5/64	10-32	\$3.25
NL-34	3/8	0.45	5/64	10-32	\$3.25
NL-34L	3/8	0.51	5/64	10-32	\$3.25
NL-43	1/2	0.42	5/64	1/4-28	\$3.25
NL-44	1/2	0.51	3/32	1/4-28	\$3.25
NL-46	1/2	0.67	3/32	1/4-28	\$3.25
NL-46L	1/2	0.73	3/32	1/4-28	\$3.25
NL-55	5/8	0.64	1/8	5/16-24	\$3.25
NL-56	5/8	0.70	1/8	5/16-24	\$3.25
NL-56L	5/8	0.85	1/8	5/16-24	\$10.00
NL-57	5/8	0.81	1/8	5/16-24	\$8.00
NL-58	5/8	0.86	1/8	5/16-24	\$3.25
NL-58L	5/8	0.89	1/8	5/16-24	\$6.00
NL-66	3/4	0.70	9/64	3/8-24	\$5.00
NL-66L	3/4	0.83	9/64	3/8-24	\$6.00
NL-68	3/4	0.86	9/64	3/8-24	\$3.25
NL-68L	3/4	0.95	9/64	3/8-24	\$3.25
NL-68S	3/4	-	-	3/8-24	\$3.25
NL-808	1	0.94	5/32	7/16-20	\$6.00
NL-810	1	1.17	5/32	9/16-18	\$6.00

NLC-23	1/4	8.2 mm	1/16	M4 x 0,7	\$4.25
NLC-33	3/8	8.8 mm	5/64	M5 x 0,8	\$4.25
NLC-33L	3/8	10.4 mm	5/64	M5 x 0,8	\$4.25
NLC-34L	3/8	13.0 mm	5/64	M5 x 0,8	\$4.25
NLC-43	1/2	10.8 mm	5/64	M5 x 0,8	\$4.25
NLC-46	1/2	17.2 mm	3/32	M6,3 x 1	\$4.25
NLC-46S	1/2	15.6 mm	3/32	M6,3 x 1	\$4.25
NLC-54	5/8	18.6 mm	1/8	M6,3 x 1	\$4.25
NLC-58	5/8	21.8 mm	1/8	M8 x 1	\$4.25
NLC-68	3/4	21.8 mm	9/64	M10 x 1	\$4.25

NLM-23	1/4	8.2 mm	1.5 mm	M4 x 0,7	\$4.25
NLM-33	3/8	8.8 mm	2.0 mm	M5 x 0,8	\$4.25
NLM-33L	3/8	10.4 mm	2.0 mm	M5 x 0,8	\$4.25
NLM-34L	3/8	13.0 mm	2.0 mm	M5 x 0,8	\$4.25
NLM-43	1/2	10.8 mm	2.0 mm	M5 x 0,8	\$4.25
NLM-44	1/2	13.2 mm	2.5 mm	M6,3 x 1	\$4.25
NLM-46	1/2	17.2 mm	2.5 mm	M6,3 x 1	\$4.25
NLM-46L	1/2	18.6 mm	2.5 mm	M6,3 x 1	\$4.25
NLM-46S	1/2	15.6 mm	2.5 mm	M6,3 x 1	\$4.25



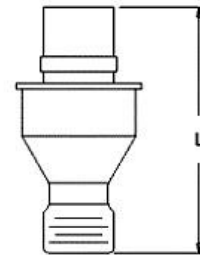
PHONE: 262-549-9414
 FAX: 262-549-9410
 JEFF@ITRINCWL.COM

LOCK PINS

STYLE	INSERT I.C.	L	H	T	NET EACH
-------	-------------	---	---	---	----------

NLM-54	5/8	18.6 mm	2.5 mm	M6,3 x 1	\$4.25
NLM-56	5/8	17.8 mm	3.0 mm	M8 x 1	\$4.25
NLM-58	5/8	21.8 mm	3.0 mm	M8 x 1	\$4.25
NLM-58L	5/8	22.6 mm	3.0 mm	M8 x 1	\$4.25
NLM-66	3/4	17.8 mm	4.0 mm	M10 x 1	\$4.25
NLM-68	3/4	21.8 mm	4.0 mm	M10 x 1	\$4.25

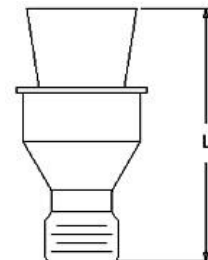
NEGATIVE LOCK PINS



STYLE	INSERT I.C.	L	H	T	NET EACH
-------	-------------	---	---	---	----------

PL-2.53	5/16	0.32	1/16	1/16	\$5.00
PL-33	3/8	0.34	5/64	5/64	\$5.00
PL-34	3/8	0.45	5/64	5/64	\$5.00
PL-44	1/2	0.52	3/32	3/32	\$8.00
PL-46	1/2	0.67	3/32	3/32	\$5.00
PL-58	5/8	0.86	1/8	1/8	\$5.00
PL-68	3/4	0.86	9/64	9/64	\$5.00

POSITIVE LOCK PINS



VALENITE LOCK PINS	NET EACH
--------------------	----------

H-405-1C	\$8.13
H-407-1C	\$8.13
H-410-1C	\$8.13
H-413-1C	\$8.13
H-414-1CA	\$8.13
H-417-1C	\$8.13
H-418-1C	\$8.13
H-419-1C	\$8.13
H-508-1C	\$8.13
H-510-1C	\$8.13
H-512-1C	\$8.13
I-H-304-1A	\$8.13
I-H-310-1	\$8.13
I-H-310-1C	\$8.13

METCUT LOCK PINS	NET EACH
------------------	----------

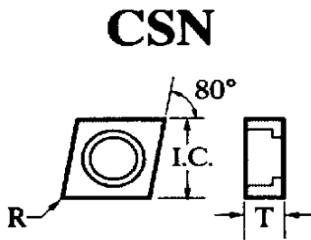
PART NO	NET EACH
053-0231	\$6.24
053-0321	\$5.20
053-0331	\$5.20
053-0431	\$5.20
053-0441	\$5.20
053-0541	\$5.20
053-0641	\$8.96

ITR
INDEXABLE TOOL REPAIR

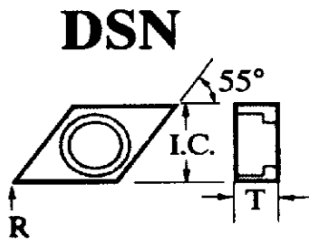
PHONE: 262-549-9414
FAX: 262-549-9410
JEFF@ITRINCWL.COM

SHIM SEATS

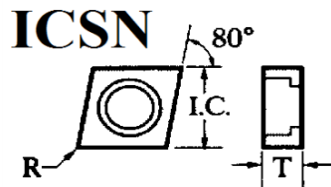
STYLE	INSERT I.C.	T	R	NET EACH
CSN-332	3/8	3/16	1/32	\$3.66
CSN-432	1/2	3/16	1/32	\$4.20
CSN-433	1/2	3/16	3/64	\$4.20
CSN-434	1/2	3/16	1/16	\$4.20
CSN-443	1/2	1/4	3/64	\$5.03
CSN-533	5/8	3/16	3/64	\$5.14
CSN-543	5/8	1/4	3/64	\$6.56
CSN-632	-	-	-	\$5.94
CSN-633	3/4	3/16	3/64	\$5.94
CSN-634	-	-	-	\$5.94
CSN-642	3/4	1/4	1/32	\$8.04
CSN-643	3/4	1/4	3/64	\$8.04
CSN-846	1	1/4	3/64	\$11.68



DSN-322	3/8	1/8	1/32	\$3.22
DSN-323	-	-	-	\$3.22
DSN-432	1/2	3/16	1/32	\$3.80
DSN-433	1/2	3/16	3/64	\$3.80
DSN-443	1/2	1/4	3/64	\$4.78
DSN-532	-	-	-	\$5.76
DSN-533	5/8	3/16	3/64	\$5.76
DSN-534	5/8	3/16	1/16	\$5.76
DSN-543	5/8	1/4	3/64	\$5.78



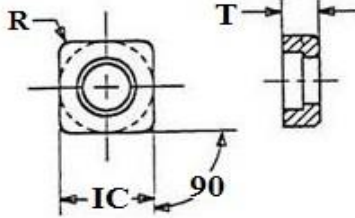
ICSN-322	3/8	1/8	1/32	\$3.54
ICSN-332	3/8	3/16	1/32	\$3.66
ICSN-333	-	-	-	\$5.78
ICSN-422	1/2	1/8	1/32	\$4.24
ICSN-423	1/2	1/8	3/64	\$4.24
ICSN-432	1/2	3/16	1/32	\$4.20
ICSN-433	1/2	3/16	3/64	\$4.20
ICSN-434	-	-	-	\$4.20
ICSN-443	1/2	1/4	3/64	\$5.30
ICSN-532	5/8	3/16	1/32	\$5.14
ICSN-533	5/8	3/16	3/64	\$5.14
ICSN-543	5/8	1/4	3/64	\$6.56
ICSN-623	-	-	-	\$5.94
ICSN-633	3/4	1/6	3/64	\$5.94
ICSN-634	3/4	3/16	1/16	\$5.94
ICSN-643	3/4	1/4	3/64	\$8.04
ICSN-644	3/4	1/4	1/16	\$8.04
ICSN-846	1	1/4	3/32	\$11.68



SHIM SEATS

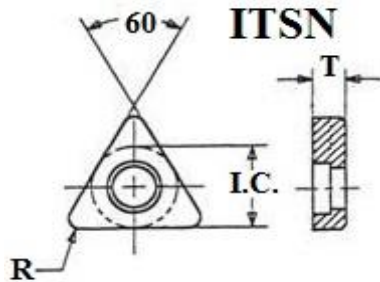
STYLE	INSERT I.C.	T	R	NET EACH
-------	-------------	---	---	----------

ISSN



ISSN-623	3/4	1/8	3/64	\$5.94
ISSN-632	3/4	1/6	1/32	\$5.76
ISSN-633	3/4	3/16	3/64	\$5.76
ISSN-634	3/4	3/16	1/16	\$5.76
ISSN-643	3/4	1/4	3/64	\$8.36
ISSN-644	3/4	1/4	1/16	\$8.36
ISSN-844	1	1/4	1/16	\$12.02
ISSN-846	1	1/4	3/32	\$12.02

ITSN



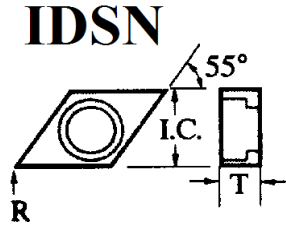
ITSN-322	3/8	1/8	1/32	\$1.92
ITSN-323	3/8	1/8	3/64	\$1.92
ITSN-324	3/8	1/8	1/16	\$1.92
ITSN-332	3/8	3/16	1/32	\$3.04
ITSN-333	3/8	3/16	3/64	\$3.04
ITSN-334	3/8	3/16	1/16	\$3.04
ITSN-423	1/2	1/8	3/64	\$5.32
ITSN-424	1/2	1/8	1/16	\$5.32
ITSN-432	1/2	3/16	1/32	\$4.72
ITSN-433	1/2	3/16	3/64	\$4.72
ITSN-434	1/2	3/16	1/16	\$4.72
ITSN-438	1/2	3/16	3/32	\$4.72
ITSN-443	1/2	1/4	1/8	\$6.06
ITSN-532	5/8	3/16	3/64	\$6.04
ITSN-533	5/8	3/16	1/32	\$6.04
ITSN-534	5/8	3/16	3/64	\$6.04
ITSN-535	5/8	3/16	1/16	\$6.04
ITSN-538	5/8	3/16	5/64	\$6.04
ITSN-539	5/8	3/16	1/8	\$6.04
ITSN-543	5/8	3/16	9/64	\$9.02
ITSN-544	5/8	1/4	3/64	\$9.02
ITSN-553	5/8	5/16	3/64	\$9.70
ITSN-633	3/4	3/16	3/64	\$9.82
ITSN-636	3/4	3/16	3/32	\$8.22
ITSN-637	3/4	3/16	7/64	\$8.22

ITR
INDEXABLE TOOL REPAIR

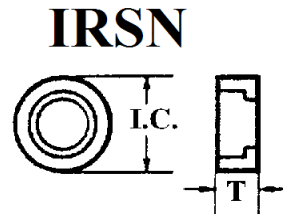
PHONE: 262-549-9414
FAX: 262-549-9410
JEFF@ITRINCWL.COM

SHIM SEATS

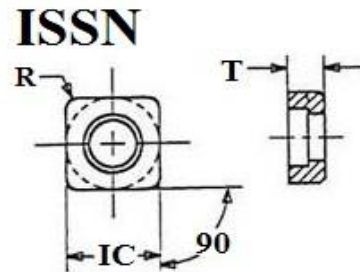
STYLE	INSERT I.C.	T	R	NET EACH
IDSN-322	3/8	1/8	1/8	\$3.22
IDSN-423	1/2	1/8	1/8	\$3.94
IDSN-432	1/2	3/16	3/16	\$3.80
IDSN-433	1/2	3/16	3/16	\$3.80
IDSN-434	1/2	3/16	3/16	\$3.80
IDSN-442	1/2	1/4	1/32	\$4.78
IDSN-443	1/2	1/4	3/64	\$4.78
IDSN-532	-	-	-	\$5.76
IDSN-533	5/8	3/16	3/64	\$5.76
IDSN-534	5/8	3/16	1/16	\$5.76
IDSN-538	5/8	3/16	1/8	\$8.10
IDSN-543	5/8	1/4	3/64	\$5.78



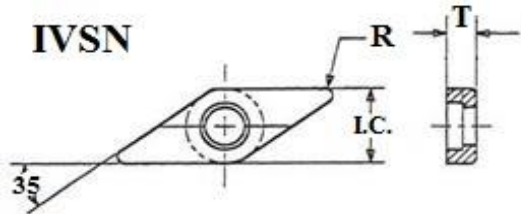
IRSN-32	3/8	1/8	-	\$3.22
IRSN-33	3/8	3/16	-	\$5.24
IRSN-41	1/2	45/64	-	\$13.32
IRSN-42	1/2	1/8	-	\$4.24
IRSN-43	1/2	3/16	-	\$3.34
IRSN-44	1/2	1/4	-	\$5.02
IRSN-53	5/8	3/16	-	\$5.75
IRSN-54	5/8	1/4	-	\$9.74
IRSN-62	3/4	1/8	-	\$8.14
IRSN-63	3/4	3/16	-	\$6.04
IRSN-84	1	1/4	-	\$12.02



ISSN-322	3/8	1/8	1/32	\$2.58
ISSN-323	3/8	1/8	3/64	\$2.58
ISSN-332	3/8	3/16	1/32	\$5.44
ISSN-333	3/8	3/16	3/64	\$5.44
ISSN-422	1/2	1/8	1/32	\$4.40
ISSN-423	1/2	1/8	3/64	\$4.40
ISSN-432	1/2	3/16	1/32	\$4.10
ISSN-433	1/2	3/16	3/64	\$4.10
ISSN-434	1/2	3/16	1/16	\$4.10
ISSN-436	1/2	3/16	3/32	\$4.10
ISSN-442	1/2	1/4	1/32	\$5.02
ISSN-443	1/2	1/4	3/64	\$5.02
ISSN-532	5/8	3/16	1/32	\$4.88
ISSN-533	5/8	3/16	3/64	\$4.88
ISSN-534	5/8	3/16	1/16	\$4.88
ISSN-543	5/8	1/4	3/64	\$8.72

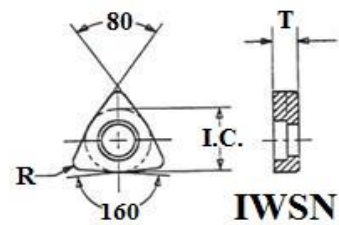


SHIM SEATS

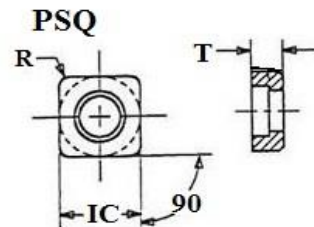


STYLE	INSERT I.C.	T	R	NET EACH
IVSN-322	3/8	1/8	1/32	\$3.38
IVSN-323	3/8	1/8	3/64	\$3.38
IVSN-324	3/8	1/8	1/16	\$3.38
IVSN-332	3/8	3/16	1/32	\$6.72
IVSN-423	1/2	1/8	3/64	\$4.48
IVSN-432	1/2	3/16	1/32	\$4.52
IVSN-433	1/2	3/16	3/64	\$4.52
IVSN-434	1/2	3/16	3/32	\$4.52

IWSN-322	3/8	1/8	1/32	\$3.82
IWSN-323	3/8	1/8	3/64	\$3.82
IWSN-422	-	-	-	\$7.54
IWSN-423	1/2	1/8	3/64	\$7.54
IWSN-432	1/2	3/16	1/32	\$5.18
IWSN-433	1/2	3/16	3/64	\$5.18
IWSN-434	1/2	3/16	1/16	\$5.18
IWSN-533	5/8	3/16	3/64	\$6.44
IWSN-635	3/4	3/16	5/64	\$8.40



PSQ-3	1/2	1/8	1/64	\$6.30
PSQ-3S	1/2	1/8	3/64	\$35.91
PSQ-4	3/4	1/8	3/64	\$8.43



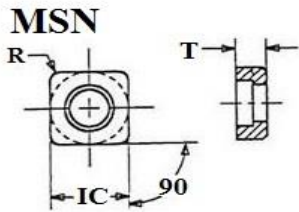
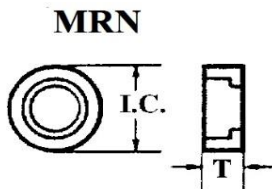
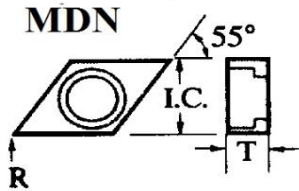
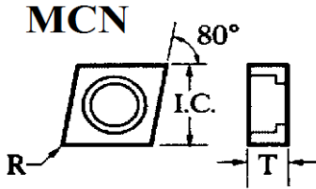
ITR
INDEXABLE TOOL REPAIR

PHONE: 262-549-9414
FAX: 262-549-9410
JEFF@ITRINCWL.COM

SHIM SEATS



PHONE: 262-549-9414
 FAX: 262-549-9410
 JEFF@ITRINCWL.COM



STYLE	INSERT I.C.	T	R	NET EACH
MCN-322	3/8	1/8	1/32	\$3.54
MCN-432	1/2	3/16	1/32	\$4.20
MCN-433	1/2	3/16	3/64	\$4.20
MCN-434	1/2	3/16	1/16	\$4.20
MCN-443	1/2	1/4	3/64	\$5.30
MCN-533	5/8	1/4	3/64	\$5.14
MCN-534	5/8	1/4	1/16	\$5.14
MCN-543	5/8	1/4	3/64	\$6.56
MCN-544	5/8	1/4	1/16	\$6.56
MCN-633	3/4	3/16	3/64	\$5.94
MCN-634	3/4	3/16	1/16	\$5.94
MCN-644	3/4	1/4	1/16	\$8.04

MDN-322	3/8	1/8	1/32	\$3.22
MDN-422	1/2	1/8	1/32	\$3.94
MDN-432	1/2	3/16	1/32	\$3.80
MDN-434	1/2	3/16	1/16	\$3.80
MDN-442	1/2	1/4	1/32	\$4.78
MDN-444	1/2	1/4	1/16	\$4.78
MDN-534	5/8	3/16	1/16	\$5.76

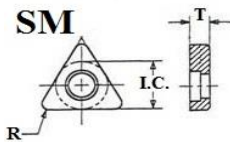
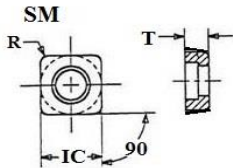
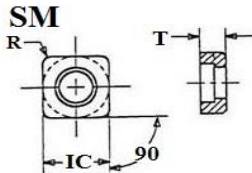
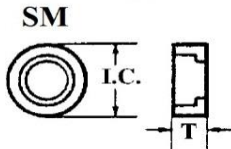
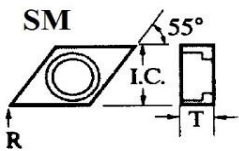
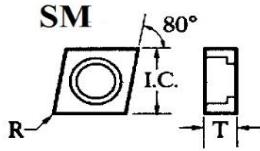
MRN-32	3/8	1/8	-	\$3.22
MRN-33	3/8	3/16	-	\$5.24
MRN-43	1/2	3/16	-	\$3.34
MRN-44	1/2	1/4	-	\$5.02
MRN-53	5/8	3/16	-	\$5.32
MRN-63	3/4	3/16	-	\$6.04
MRN-84	1	1/4	-	\$12.02

MSN-323	3/8	1/8	3/64	\$2.58
MSN-433	1/2	3/16	3/64	\$4.10
MSN-436	1/2	3/16	3/32	\$4.10
MSN-442	1/2	1/4	1/32	\$5.02
MSN-443	1/2	1/4	3/64	\$5.02
MSN-533	5/8	3/16	3/64	\$4.90
MSN-543	5/8	1/4	3/64	\$8.72
MSN-634	3/4	3/16	1/16	\$5.76
MSN-644	3/4	1/4	1/16	\$8.36
MSN-846	1	1/4	3/32	\$12.02

SHIM SEATS



PHONE: 262-549-9414
 FAX: 262-549-9410
 JEFF@ITRINCWL.COM



STYLE	INSERT I.C.	T	R	NET EACH
SM-182	1/2	1/8	1/32	\$3.00
SM-303	1/2	3/16	1/32	\$4.36
SM-304	3/4	3/16	3/64	\$5.88
SM-305	3/4	1/4	3/64	\$10.20
SM-319	1	1/4	3/32	\$14.48
SM-385	3/4	1/4	3/64	\$10.20
SM-390	5/8	3/16	3/64	\$5.42
SM-396	1/2	1/2	3/16	\$11.08

SM-306	1/2	3/16	1/32	\$4.40
SM-307	5/8	3/16	3/64	\$6.04

SM-45	1/2	1/8	-	\$4.10
SM-218	1/2	3/16	-	\$6.02
SM-404	1/2	1/4	-	\$4.22

SM-297	1/2	3/16	1/32	\$3.96
SM-298	5/8	3/16	3/64	\$5.70
SM-299	3/4	3/16	3/64	\$5.94
SM-300	3/4	1/4	3/64	\$9.62

SM-27	3/4	1/8	3/64	\$5.14
SM-43	1/2	1/8	1/16	\$4.06
SM-47	1/2	3/16	1/16	\$6.34
SM-216	3/4	3/16	3/64	\$6.64

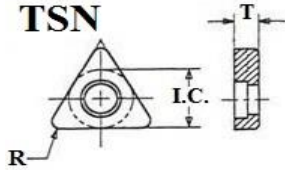
SM-36	3/4	1/8	3/64	\$5.62
SM-40	1/2	1/8	1/32	\$4.20

SM-290	3/8	1/8	1/32	4.10
SM-291	3/8	3/16	1/32	5.24
SM-292	1/2	3/16	3/64	5.14
SM-293	1/2	3/16	1/16	5.88
SM-294	3/4	3/16	3/32	8.38
SM-391	1/2	1/4	3/64	6.96

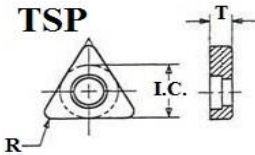
SHIM SEATS



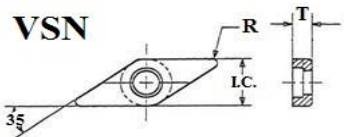
PHONE: 262-549-9414
 FAX: 262-549-9410
 JEFF@ITRINCWL.COM



STYLE	INSERT I.C.	T	R	NET EACH
TSN-322	3/8	1/8	1/32	\$2.92
TSN-323	3/8	1/8	3/64	\$2.92
TSN-324	3/8	1/8	1/16	\$2.92
TSN-332	3/8	3/16	1/32	\$3.04
TSN-333	3/8	3/16	3/64	\$3.04
TSN-432	1/2	3/16	1/32	\$5.14
TSN-433	1/2	3/16	3/64	\$5.14
TSN-434	1/2	3/16	1/16	\$5.14
TSN-435	1/2	3/16	5/64	\$5.14
TSN-438	1/2	3/16	1/8	\$4.72
TSN-532	5/8	3/16	1/32	\$6.04
TSN-533	5/8	3/16	3/64	\$6.04
TSN-534	5/8	3/16	1/16	\$6.04
TSN-535	5/8	3/16	5/64	\$6.04
TSN-538	5/8	3/16	1/8	\$6.04
TSN-539	5/8	3/16	9/64	\$6.04
TSN-544	5/8	1/4	1/16	\$9.02
TSN-633	3/4	3/16	3/64	\$9.88
TSN-634	3/4	3/16	1/16	\$9.88
TSN-635	3/4	3/16	5/64	\$8.22
TSN-636	3/4	3/16	3/32	\$8.22
TSN-637	3/4	3/16	7/64	\$8.22



TSP-321	3/8	1/8	1/64	\$3.00
TSP-431	1/2	3/16	1/64	\$7.44



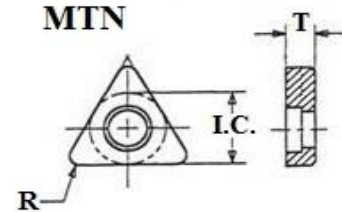
VSN-322	3/8	1/8	1/32	\$3.38
VSN-324	3/8	1/8	1/16	\$3.38

SHIM SEATS

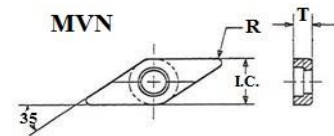


PHONE: 262-549-9414
 FAX: 262-549-9410
 JEFF@ITRINCWL.COM

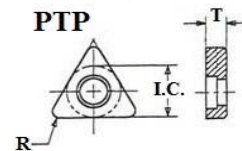
STYLE	INSERT I.C.	T	R	NET EACH
MTN-322	3/8	1/8	1/32	\$2.96
MTN-323	3/8	1/8	3/64	\$2.96
MTN-324	3/8	1/8	1/16	\$2.96
MTN-332	3/8	3/16	1/32	\$3.34
MTN-333	3/8	3/16	3/64	\$3.04
MTN-334	3/8	3/16	1/16	\$3.04
MTN-432	1/2	3/16	1/32	\$4.72
MTN-433	1/2	3/16	3/64	\$4.72
MTN-434	1/2	3/16	1/16	\$4.72
MTN-438	1/2	3/16	1/8	\$4.72
MTN-443	1/2	1/4	3/64	\$6.06
MTN-534	5/8	3/16	1/16	\$6.04
MTN-538	5/8	3/16	1/8	\$6.04
MTN-543	5/8	1/4	3/64	\$9.02
MTN-637	3/4	3/16	7/64	\$8.22



MVN-322	3/8	1/8	1/32	\$3.38
MVN-433	1/2	3/16	3/16	\$4.52

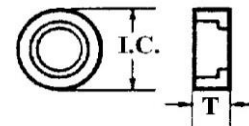


PTP-3	3/8	1/8	1/64	\$3.00
PTP-3S	3/8	1/8	1/64	\$8.14
PTP-4	1/2	1/8	3/64	\$4.18
PTP-4S	1/2	1/8	1/32	\$4.18

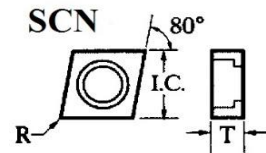


RS-43P	1/2	3/16	-	\$3.96
RS-53P	5/8	3/16	-	\$7.24
RS-63P	3/4	3/16	-	\$6.26
RS-83P	1	3/16	-	\$11.20

RS & RSN



RSN-32	3/8	1/8	-	\$3.22
RSN-33	3/8	3/16	-	\$5.24
RSN-43	1/2	3/16	-	\$3.34
RSN-53	5/8	3/16	-	\$5.32
RSN-63	3/4	3/16	-	\$6.04
RSN-84	1	1/4	-	\$12.02



SCN-43	1/2	1/8	1/32	\$4.18
SCN-54C	5/8	3/16	3/64	\$5.82

SHIM SEATS

STYLE	INSERT I.C.	T	R	NET EACH
-------	-------------	---	---	----------

SM-26	1/2	1/8	3/64	\$4.10
SM-42	3/8	1/8	1/32	\$3.64
SM-48	3/8	3/16	1/32	\$3.82

SM-37	1/2	1/8	3/64	\$4.18
SM-41	3/8	1/8	1/64	\$3.00

SM-310	3/8	1/8	3/64	\$4.20
SM-386	1/2	1/8	1/64	\$5.46

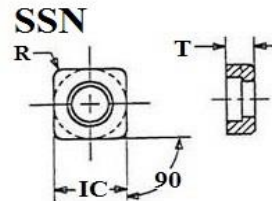
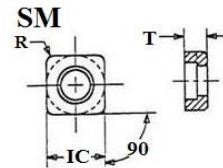
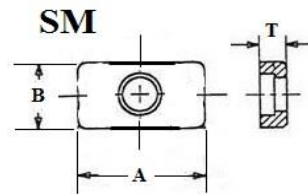
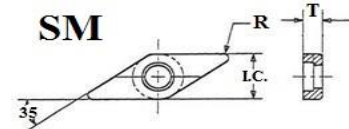
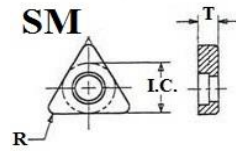
A Dim

SM-416	13/16	3/8	3/16	\$8.30
SM-419	47/64	27/64	3/16	\$7.94
SM-420	7/8	1/4	3/16	\$6.68

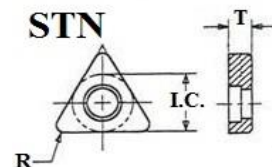
SM-122	1	1/4	1/16	\$18.28
--------	---	-----	------	---------

SSN-322	3/8	1/8	1/32	\$2.58
SSN-323	3/8	1/8	3/64	\$2.58
SSN-43	1/2	1/8	3/64	\$4.30
SSN-432	1/2	3/16	1/32	\$4.24
SSN-433	1/2	3/16	3/64	\$4.24
SSN-532	5/8	3/16	1/32	\$4.88
SSN-533	5/8	3/16	3/64	\$4.88
SSN-54	5/8	1/8	3/64	\$7.14
SSN-54C	5/8	3/16	3/64	\$7.34
SSN-543	5/8	1/4	3/64	\$8.72
SSN-632	3/4	3/16	1/32	\$5.76
SSN-633	3/4	3/16	3/64	\$5.76
SSN-634	3/4	3/16	1/16	\$5.76
SSN-643	3/4	1/4	3/64	\$8.36
SSN-644	3/4	1/4	1/16	\$8.36
SSN-844	1	1/4	1/16	\$12.02
SSN-846	1	1/4	3/32	\$12.02

STN-32	3/8	1/8	3/64	\$3.80
STN-43	1/2	1/8	1/16	\$4.36
STN-54	5/8	1/8	1/16	\$8.04
STN-54C	5/8	3/16	1/16	\$7.74
STN-66	3/4	3/16	3/32	\$10.92



PHONE: 262-549-9414
FAX: 262-549-9410
JEFF@ITRINCWL.COM



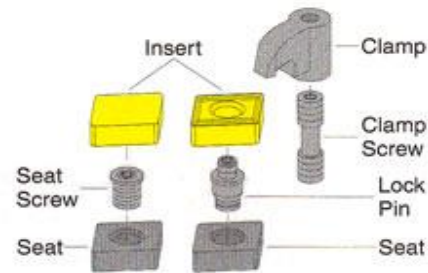
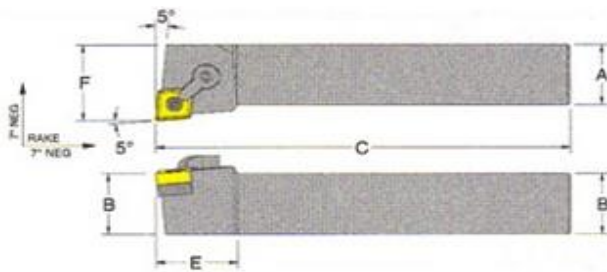


Is your tooling budget getting

SQUEEZED?

Now is a perfect opportunity to survey your shop and collect used, damaged and obsolete indexable tools.

For a fraction of the cost, you can tool up new and current jobs with your existing tools.



ITR, Inc. repairs, modifies and qualifies all makes of INDEXABLE turning, drilling and milling tools. Ask us about our FREE on-site sorting and inventory service.

* Standard "LP" and "NL" style lockpins as well as many other standard replacement parts are stocked at ITR.

We will provide new hardware for all of our repairs on request.

CONTACT: JEFF SCHARA

**ITR INC
N16 W22033 JERICHO DR. UNIT 1
WAUKESHA, WI 53186
PHONE: 262-549-9414
FAX: 262-549-9410
EMAIL: JEFF@ITRINCWI.COM**